

**CITY OF BRENTWOOD  
PUBLIC WORKS/OPERATIONS**

2201 Elkins Way  
Brentwood, CA 94513

|                            |                            |                            |                                    |                          |                          |                        |                              |
|----------------------------|----------------------------|----------------------------|------------------------------------|--------------------------|--------------------------|------------------------|------------------------------|
|                            |                            |                            |                                    |                          |                          |                        |                              |
| Toilet<br>24%<br>33.1 gphd | Shower<br>20%<br>28.1 gphd | Faucet<br>19%<br>26.3 gphd | Clothes washer<br>17%<br>22.7 gphd | Leak<br>12%<br>17.0 gphd | Other*<br>4%<br>5.3 gphd | Bath<br>3%<br>3.6 gphd | Dishwasher<br>1%<br>1.6 gphd |

\* The "Other" category includes evaporative cooling, humidification, water softening, and other uncategorized indoor uses.



# WATER CONSERVATION NEWS

**2022**

**CITY OF BRENTWOOD  
PUBLIC WORKS/OPERATIONS  
WWW.BRENTWOODCA.GOV/SAVEWATER**

## Water Like a Pro

The most efficient way to water lawns and landscapes is to apply water deeply and infrequently, adjusting the schedule to reflect seasonal changes. This will improve landscape quality, reduce water waste and even lower your water bills. The table on the back page is the recommended irrigation schedule for lawns and landscapes in most of Contra Costa County including Brentwood.

### Repeat Cycles

Clay soil cannot absorb water as fast as sprinklers apply it. Instead of watering for one long cycle, use 2 or 3 shorter cycles with an hour in between. This will allow the water to soak in much better and encourage deeper roots.

### Watering Days Per Week

Adjust the watering days per

week to reflect seasonal changes. The table on the back page lists the recommended watering days per week for lawns and landscapes.

### Minutes of Watering per Day

Lawns watered with pop-up spray sprinklers generally should be set to water for 2 to 3 cycles of 3 to 6 minutes per cycle. Lawns with impact or rotor sprinklers should be set to water for 2 to 3 cycles of 7 to 10 minutes per cycle. Set the watering cycles with an hour in between to allow the water to soak in. Trees, shrubs, and groundcovers watered with pop-up spray sprinklers generally should be set to water for 3 cycles of 3 to 6 minutes per cycle. Landscape areas watered by impact or rotor sprinklers should be set to water for 3 cycles of 7



to 10 minutes per cycle.

See the back page for a sample irrigation schedule.

## Check for Household Leaks

There is a low flow indicator on the face of the meter (see illustration on page 3.) On some meters, it may be a small triangle located in the center. It will rotate with even a very low flow of water through the meter. To check for leaks, turn off all known water uses inside and outside the house. If you have an automatic ice-maker, make sure it is not operating. When

all water is turned off, the low flow indicator should not move. If the low flow indicator is moving, there is water flowing somewhere on your property. Try turning off the house shut-off valve (usually located where the waterline enters the house). If the low flow indicator is still moving, there is water flowing outside the house (most likely in the irrigation

system). If the low flow indicator stops moving when the house valve is shut off, water was flowing inside the house (this could be a toilet leak, a leaky pipe, or associated with any device that uses water.)

### Inside this issue:

- Water Like a Pro **1**
- Checking for Leaks **1**
- Bill Adjustments **2**
- Understanding your Utility Bill **2**
- Reading your Water Meter **3**
- Landscape Water Calculator **3**
- Sample Irrigation Schedule **4**

| Today's Date | Today's Meter Reading | Minus | Previous Meter Reading | Equals | Gallons Used | Divided by # of Days Between Readings | Equals | Average Gallons Used per Day |
|--------------|-----------------------|-------|------------------------|--------|--------------|---------------------------------------|--------|------------------------------|
|              |                       | -     |                        | =      |              | ÷                                     | =      |                              |
|              |                       | -     |                        | =      |              |                                       | =      |                              |
|              |                       | -     |                        | =      |              |                                       | =      |                              |
|              |                       | -     |                        | =      |              |                                       | =      |                              |
|              |                       | -     |                        | =      |              |                                       | =      |                              |
|              |                       | -     |                        | =      |              |                                       | =      |                              |
|              |                       | -     |                        | =      |              |                                       | =      |                              |

We're on the web  
[www.brentwoodca.gov/savewater](http://www.brentwoodca.gov/savewater)

### Sample Water Conserving Irrigation Schedule

| Month         | Watering Days per Week |                              |
|---------------|------------------------|------------------------------|
|               | Lawns                  | Trees, Shrubs, Ground-covers |
| Jan, Feb, Mar | Off                    | Off                          |
| Apr           | 1                      | 1                            |
| May           | 2-3                    | 1                            |
| Jun           | 3-4                    | 2                            |
| Jul           | 4                      | 2-3                          |
| Aug           | 3-4                    | 2                            |
| Sep           | 3                      | 1-2                          |
| Oct           | 2                      | 1                            |
| Nov           | 1                      | Off                          |
| Dec           | Off                    | Off                          |

Note—due to individual site conditions, additional schedule adjustments may be necessary.



### Utility Billing Courtesy Notice

Service Address/Date:

A check of your meter or observation indicates:

|  |   |
|--|---|
| <input type="checkbox"/> High use  | <input type="checkbox"/> Excess irrigation/runoff                           |
| <input type="checkbox"/> Possible leak customer side                               | <input type="checkbox"/> Possible water running inside                      |
| <input type="checkbox"/> No indication of a leak                                   | <input type="checkbox"/> Need to start service                              |
| <input type="checkbox"/> House main valve off                                      | <input type="checkbox"/> Water off at meter                                 |
| <input type="checkbox"/> Plant material obstructed meter box (please clean debris) | <input type="checkbox"/> Watering between 8 a.m. – 7 p.m.                   |
| <input type="checkbox"/> Washing paved or hardscape surfaces                       | <input type="checkbox"/> Watering within 48 hours after measurable rainfall |

Technician name:

For information regarding this notice, contact:

- Utility Billing (925) 516-5415
- Water Conservation (925) 516-6045



**Do you qualify for a bill adjustment due to a leak?**

**Brentwood Municipal Code and Adjustments 3.26.190**

Bill adjustments will generally not be made on excess delivery or high water consumption except when evidence clearly shows that the excess delivery is due to a leak on an underground or unexposed water service line and not wasteful use, defective irrigation lines or otherwise due to the consumer's acts, omissions, or negligence as determined by the director of public works or designee. For purposes of this section, water service lines include any customer facilities that connect with the city's facilities, such as the pipeline from the meter box, control valve and other necessary or required fittings to provide water to the premises from the meter box.

A bill adjustment will only be made after adequate repairs have been made and only once it is certain such leak or loss will not occur again as determined by the director of public works or designee. No adjustment or allowance will be made covering more than one billing period nor will more than one adjustment or allowance be made to the same customer for the same premises in any twelve-month period.

If it is determined that an adjustment is warranted, an adjustment in the amount of fifty percent of the excess water consumption will be reflected in the next billing. Excess delivery will be calculated by comparing the water usage during the leak month to the customer's prior consumption during the same season of the year, if available. If prior consumption during the same season of the prior year is not available, a reasonable comparison with use of other customers during the same period receiving the same class of service under similar circumstances will be used.

**Understanding your Utility Bill**

Understanding your utility bill may help you reduce your bill: Your utility bill includes a water charge, water base charge, garbage, sewer lateral charge, and a sewer base charge.

- Reducing your irrigation may reduce your water charges.
- Turning off your irrigation during the winter may reduce your sewer charge.

|   |                |  |               |
|---|----------------|--|---------------|
| Water   | Tier 1         | 01—05 Units  | = \$3.16 unit |
|   | Tier 2         | 06—14 Units  | = \$6.09 unit |
|   | Tier 3         | 15—20 Units  | = \$7.15 unit |
|   | Tier 4         | 21 and over  | = \$7.38 unit |
| Water meters are read monthly; One unit = 1,000 gallons |                |  |               |
| Sewer   |                | \$16.42—65.64 max. Sewer charge based on average winter metered water. |               |
| Sewer Lateral Maintenance                               |                | \$3.23   |               |
| Meter Charge  |                | \$26.67 (5/8" or 3/4")   |               |
|   |                | \$37.71 (1")   |               |
| Garbage   | 32 Gallon Cart | \$29.77  |               |
|   | 64 Gallon Cart | \$41.00  |               |
|   | 96 Gallon Cart | \$54.03  |               |



**Important Phone Numbers**

Public Works/Operations (925) 516-6000  
 Utility Billing (925) 516-5415 Ⓞ Solid Waste (925) 516-6090  
 Water Conservation (925) 516-6045



**How To Read Your Meter**

**Locate Your Meter**

The water meter is usually located near the curb in front of the house or place of business, in the ground, housed in a concrete box marked WATER. Carefully remove the meter box lid using a tool such as a large screwdriver. Visually examine the area around the meter to ensure your safety (black widow spiders are known to nest in meter boxes).

**Read Your Meter**

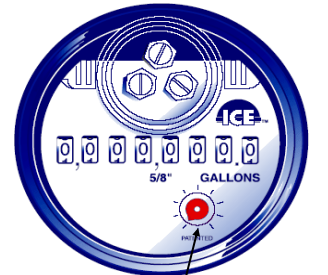
Reading a water meter is similar to reading an automobile odometer. Most meters have a seven or eight-digit number on the face, called the readout (see illustration). This shows the total number of gallons used since the meter was installed.

**Figure Your Usage**

To calculate your water usage, pick a starting point at which to read

your meter. Record the reading and date. A day or two later, read your meter again. Subtract the first reading from the second to determine how much water was used. For example:

Second reading 68180 gal  
 First reading 67150 gal  
 Water Used 1030 gal

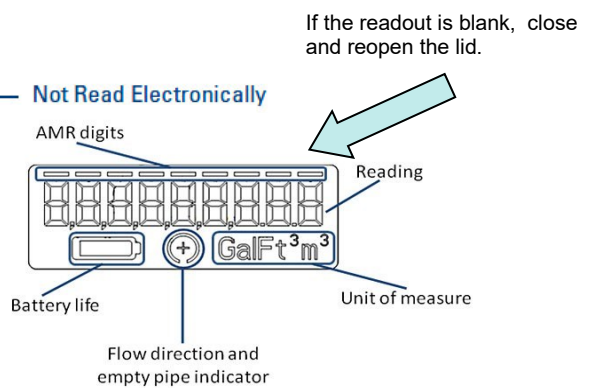
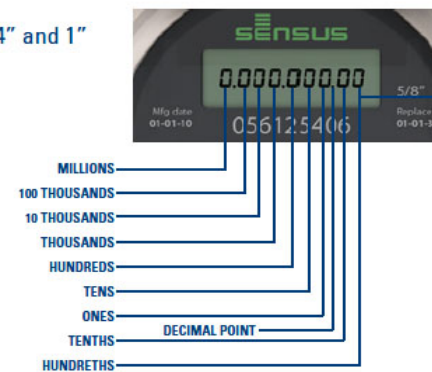


Note: The City of Brentwood charges for water by the 1000-gallon unit (always rounding down.) Thus, in the example above, 1030 gallons would be rounded to one (1) billing unit on your water bill.

Low Flow Indicator

**Reading your Electronic Water Meter**

5/8", 3/4" and 1"



Not Read Electronically

If the readout is blank, close and reopen the lid.

**Potable Water Use Restrictions**

The following potable water use restrictions are permanent:

- NO watering between 8:00 a.m.— 7 p.m.
- NO excessive landscape runoff.
- NO watering within 48 hours after measurable rainfall.
- NO washing paved or hardscape surfaces.
- NO washing vehicle without shutoff nozzle.
- NO water use for non-recirculating fountains.

**Monitor Your Water Usage**

**"Read your water meter on a regular basis to track water use trends and catch leaks."**

Read your meter on a regular basis to track water usage trends and catch leaks. Keep a record of all readings. You will be able to detect trends from season to season and year to year. If your household changes in any way that affects water (e.g., new family member, plumbing upgrade, etc.), you will be able to determine the effect of the change. For your convenience, the City has a tracking form available on the cover page.