



The Shops at Lone Tree Village

Hwy 4 and Lone Tree Way, Brentwood

APPROVED PLAN

PERMIT NO. MSP18-001

RESOLUTION NO. 19-002

ACTION: APPROVED DENIED

DATE 2/5/2019

Prepared for:



Tekin & Associates
2727 LBJ Freeway, Suite 785
Dallas, Tx 75234
T. 469.458.0485
www.tekindevelopment.com

Prepared by:



Arrow Sign Company
1051 46th Avenue
Oakland, Ca 94601
T. 510.533.7693
F. 510.533.0815
www.arrowsignco.com

TENANT SIGN DESIGN INTENT

A. Signage Objectives.

1. Ensure a consistent and imaginative sign design program for all Tenants. Flexibility of design is encouraged but overall visual harmony that will complement the overall projects architecture.
2. Contribute to the marketability of the entire project as well as individual businesses.
3. Ensure visual aesthetics while being practical to facilitate the review process and approval from the landlord and the City of Brentwood.

B. Sign Allowances Per Building Designation

A map is provided to determine building tenant type which will designate specific allowances accordingly. Tenants and their designers / sign contractors will need to refer to their designated zoning to develop sign designs in compliance with those specified allowances.

C. Sign Enforcement for Non – Compliance

All signs shall be reviewed for general conformance with this criterion. Landlord approval does not relieve the tenant nor their signage suppliers with the requirements of the Cities sign ordinance, this sign criteria or the terms of their lease, codes, standards, or the law.

Each tenant shall be fully responsible for any repair, damage or discoloration caused to any building surface by the installation or removal of signage. Landlord reserves the right, but is not obligated to hire an independent electrical engineer, at tenant's sole expense, to periodically inspect the installation of all tenant's signs. Tenants will be required to have any discrepancies and/or code violations corrected at their expense.

D. Tenant Sign Criteria Agreement

This criteria is part of the tenant's lease agreement and tenant must comply with these standards as a requirement for leasing retail space.

E. Review Process

All permanent signs require City review and approval prior to installation. Tenant shall submit to landlord for approval, one (1) electronic copy of detailed design and shop drawings. These drawings shall include the building elevation to which the signs are to be attached, sign dimensions, graphics, location, colors and method of attachment. This approval must be obtained prior to submittal to the City. Tenant must include a copy of the landlord approved sign design with the sign review application to the city.

SIGNS PER BUILDING TENANT TYPE

Wall Signs

1. Face illuminated Pan Channel Letters / Logo

Individual letters, fabricated aluminum, pan channel construction with acrylic faces. Faces may have colored acrylic or colored film overlays. Internal illumination to be LED. Raceways / Wireways are not allowed. Letters may have shaped FCO backgrounds if it is integral to the logo or provides contextual background to the sign. Letters may be mounted flush or raised off building facia. Exposed conduit or electrical is not allowed.

2. Halo illuminated Reverse Pan Channel Letters / Logo

Individual letters, fabricated aluminum, reverse pan channel construction with clear lexan backs for weather proofing. Internal illumination to be LED. Halo lighting may be white or colored at tenant's discretion. Raceways / Wireways are not allowed unless hidden by offset background panel and must be approved by landlord. Letters may have shaped FCO backgrounds if it is integral to the logo or provides contextual background to the sign. Letters to be pegged off building facia or back ground panel 1-1/2". Exposed conduit or electrical is not allowed.

Blade Signs

1. Non – illuminated Pedestrian Level Blade Signs

Blade signs shall be aluminum construction with fabricated metal brackets. Sign shall not project more than 2'-6" from wall and a minimum of 3" is required between sign panel and tenant building facia. Signs shall be no lower than 8'-6" from grade. All brackets/supports must be consistent with the attached design. Dimensional graphics and lettering are preferred but vinyl film graphics are also acceptable. Maximum square footage not exceed 4 square feet. **SEE EXHIBIT E**

Prohibited Signs

1. Temporary signs, inflatable signs, placard and flags of any type shall be prohibited, except as otherwise approved by the Landlord and City prior to installation.
2. No animated, flashing, audible, off-premise, or vehicle signs are allowed.
3. No exposed fasteners, ballast or conduit will be permitted.
4. No roof mounted signs will be permitted. No cabinet signs will be allowed.
5. LED Message boards located on the tenant's exterior or interior.

Ancillary Signs

Ancillary signs are signing opportunities which are not considered as part of the allowable sign area calculation's. These signs are considered subordinate to the main sign and are generally at the tenant's entrance eye level.

1. Illuminated Open Signs

Illuminated open signs are permitted but not required. Sign must be placed near or above the main entrance to the tenant space. Neon or LED signs are allowed but must not flash. Costs must terminate in the ceiling and must not be visible from the outside. Maximum square footage not exceed 2 square feet.

2. Permanent Window Graphics

Window graphics must be permeant and applied second surface to the tenant's window. All graphics must be professionally designed and installed by a licensed contractor. Drawings must be approved by the landlord prior to installation.

3. Door / Sidelight Operational Graphics.

Each tenant must provide hours of operation on the entry door or sidelight window adjacent to the door. Hours to be a minimum of 3/4" individual letters / numerals graphic vinyl film.

GENERAL SIGN DESIGN GUIDELINES

The following guidelines are intended to help tenants determine the appropriate sign solution for their business as well as provide a general outline of the landlord approval process.

Sign Design and Placement

1. Signs shall be centered horizontally and vertically over each tenant entry but may also be centered on tenant frontage or where the buildings architecture creates a logical area for the signs placement. Endcap or corner tenants will be allowed secondary signs on the side elevations, provided they do not exceed the square footage allowance for the tenant's space.
2. All signs concepts are to be generated from camera ready electronic, vector artwork. Drawings must be prepared by a professional designer or sign contractor and submitted to the Landlord for written approval. Signs shall be designed in a manner that is not only imaginative but also of high graphic quality. In addition, signs should be compatible with and complementary to adjacent facades.
3. All primary sign(s) should consist of a logo and / or "Trade Name" only. Tag lines, merchandise descriptions or slogans are not allowed.
4. All exterior signs shall be secured by concealed fasteners unless the attachment is a part of the design element. If so, tenant is required to secure approval from the landlord.

Lighting

1. Only letters and logos shall transmit light. Backgrounds may be illuminated indirectly via reverse pan, halo lighting.
2. All illuminated signs are to be controlled by an astronomical time clock. Signs shall be turned on at dusk and turned off no later than 1AM

Colors

1. All colors of individual letters must contrast with background wall / facia. Tenant signs should be legible both day and night.
2. Creativity is encouraged but unconventional color schemes or colors that clash with the buildings color scheme must be reviewed and approved by the landlord prior to formal submittal.

Materials

Quality materials are critical to the overall image of the tenant's business. The following is a list of agreeable signage materials.

1. Automotive or industrial grade paints in a polished, satin or matt finish.
2. Etched metal finishes.
3. Fabricated or abated steel and aluminum with finished edges.
4. Acrylic / Lexan in white, colored or clear and transparent finishes with or without vinyl film decoration.
5. Vinyl overlays. Matt, gloss or satin finish in black, white, clear or colored finishes. Films may be digitally printed with a UV laminate film overlay. Out door life rating must be a minimum of 3 years and supplier to be specified in design drawings.
6. Wood with a weather protective coating.

GENERAL SIGN DESIGN GUIDELINES

Non – Approved Materials

1. Simulated wood vinyl's or plastic laminates
2. Reflective films.
3. Sintra or cardboard

Construction Requirements

The following requirements are critical and are not to be deviated from. Further they are a part of the tenant's lease agreement. Deviation or violation of these requirements could impact the lease agreement resulting in termination.

General Fabrication / Installation Requirements

1. All signs and their installation shall comply with all applicable city building and electrical codes, and bear a UL label. Internal illumination to be labeled in accordance with the "National Board of Fire Underwriters Specifications". Manufacturers labels must be located in a viewable location only. No other labels or identification will be permitted on the exposed surfaces of the sign except those required by local ordinances.
2. Tenant's sign contractor shall completely install and connect sign display and primary wiring at sign location per Landlord's approval. Final hookup and connections by tenant's sign contractor at tenant's expense.
3. Sign contractor shall repair any damage caused by his work. Damage to structure that is not repaired by the Sign Contractor shall become the tenant's responsibility to correct.
4. Tenant shall be fully responsible for the securing land lord and City approvals / permits and entitlements prior to installing any signage.
5. Any welded seams on sign faces should be finished smooth.
6. All penetrations of exterior fascia to be sealed watertight, and finished to match adjacent material; subject to Landlord's approval.
7. Surfaces which are intended to be flat shall be without bulges, oil-canning, or other deformities.
8. All signs shall be kept in good condition, be legible, adequately repaired, maintained, and painted by the tenant. All repairs shall be equal in quality and design to the original signs. The standards for maintenance and repair of signs shall be that which will assure the highest visual quality.
9. Weep holes on bottom will be required for all illuminated signs including logos and letters. Holes must not be too large to show significant light leaks.
10. Uniform illumination of letter forms will be required. Sign faces to show uniform illumination and brightness for all copy and logos. Halo illuminated signs must also be uniform with no gapping.

TENANT SIGN SIZE & QUANTITY

General

Tenants are allotted signs as per the following classification of their leased building space. Tenant signs are also restricted in size according to their building / lease.

Anchor Tenants (Zone 1)

Building A - Those tenants that occupy 35,000 SF or more. Anchor tenants are allowed the following: 1.5 sq. feet per each lineal foot of frontage. Signs must not exceed 75% of tenant's lineal frontage or 75% of the length of the architectural feature upon which the sign is placed. Anchor tenants are allowed signage on up to (3) three elevations. Maximum Letter/Logo height must not exceed 11' 0". Anchor tenants are also allowed signage on freestanding pylon and monument(s) signs as directed by the Landlord as well as tenant blade signs at primary and secondary entrances to their building. **SEE EXHIBIT A**

Single PAD Restaurant / Retail Tenants (Zone 2)

Those tenants that occupy 3,000 SF or more. These tenants are allowed the following: 1.5 sq. feet per each lineal foot of frontage. Signs must not exceed 75% of tenant's lineal frontage. Tenants are allowed signage on two (2) or three (3) elevations. Maximum Letter height must not exceed 30". Tenants are also allowed signage on freestanding pylon and monument(s) signs as directed by the Landlord as well as tenant blade signs at the primary and secondary entrances to their building. **SEE EXHIBIT B**

Endcap Tenants (Zone 3)

Those tenants that occupy 2,500 SF or more. These tenants are allowed the following: 1.5 sq. feet per each lineal foot of frontage. Signs must not exceed 75% of tenant's lineal frontage or 75% of the length of the architectural feature upon which the sign is placed. Tenants are allowed signage on up to (3) three elevations. Maximum Letter height must not exceed 24". Tenants are also allowed signage on freestanding pylon and monument(s) signs as directed by the Landlord as well as tenant blade signs at the primary entrance to their space. **SEE EXHIBIT C**

In-line Tenants (Zone 3)

Those tenants that occupy 500 SF or more. These tenants are allowed the following: 1.5 sq. feet per each lineal foot of frontage. Signs must not exceed 75% of tenant's lineal frontage or 75% of the length of the architectural feature upon which the sign is placed. Maximum Letter height must not exceed 24". Signs will be allowed on up to (2) elevations. **SEE EXHIBIT D**

Calculation for Square Footage:

All signs are further restricted by area as defined as a square footage allotment based upon a ratio of 1.5 square feet per lineal foot of building frontage. Calculation is based upon the total length of each line of letters (including any voids between words / letters) by the height of the letters within a bounding box (logos may be calculated as a separate item within a bounding box). Ascenders and descenders of letter fonts may extend beyond the capital height as per the nature of the font and need not be calculated within the bounding box. Logo calculations are based upon the area of graphics within the bounding box. Note: Lineal foot of frontage is the calculated length between the centerlines of the demising walls that define the tenant space.

Freestanding Project / Tenant Pylon and Monument Signs

A. Pylon Sign - There will be one (1) double faced internally illuminated Center ID / tenant pylon sign located at the centers Northwest corner adjacent to PAD F. This sign will provide the public traveling along Highway 4 with timely notice of the services provided within the center. **SEE EXHIBIT F**

TENANT SIGN SIZE & QUANTITY

General

B. Monument Sign - There will be one (1) double faced internally illuminated Center ID / tenant monument sign located at the centers Northeast corner between to PAD F and PAD E. This sign will provide the public traveling along Jeffery Way with timely notice of the services provided within the center. **SEE EXHIBIT G**

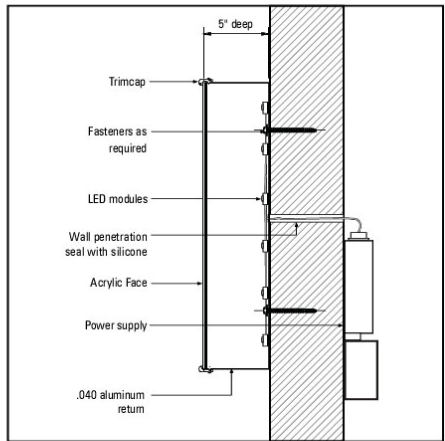
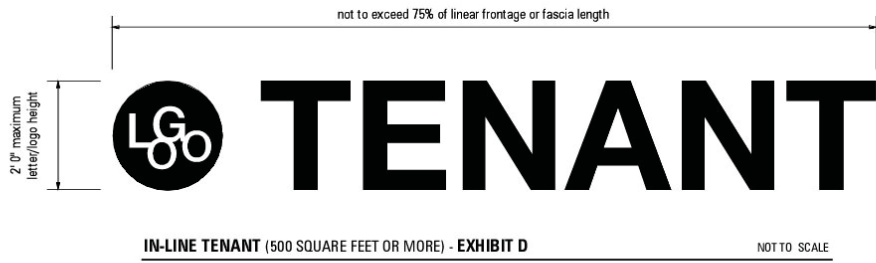
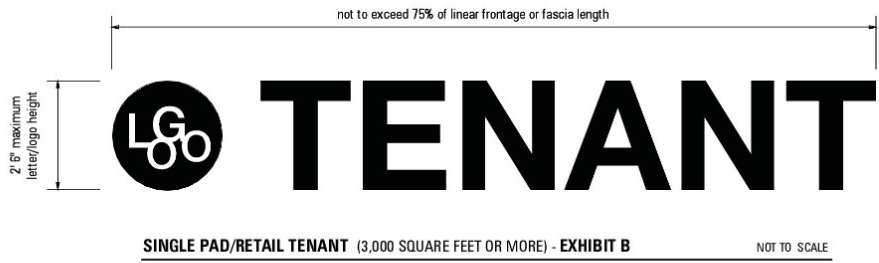
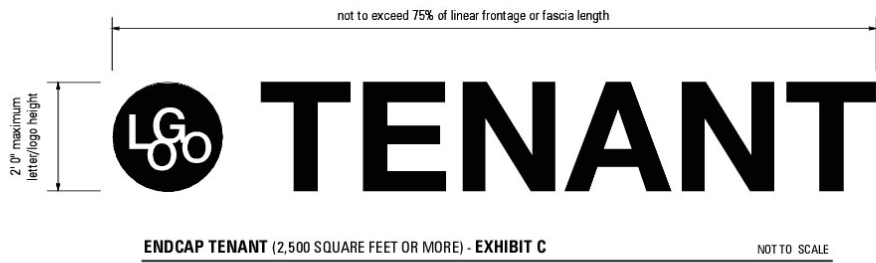
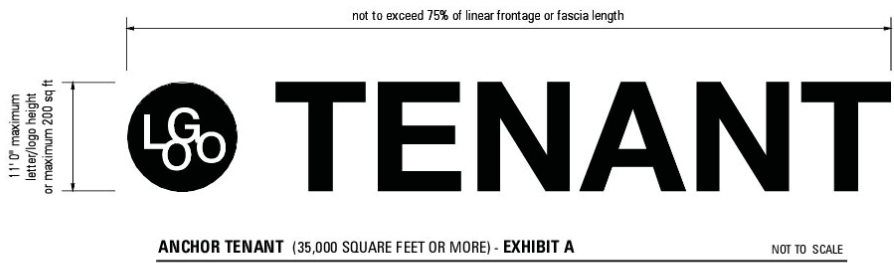
C. Single Tenant Monument - There will be one (1) double faced internally illuminated tenant monument sign located at the centers Northeast corner between to PAD F and PAD E. This sign will serve as the primary ground ID/Services sign. It may have digital pricing element. **SEE EXHIBIT H**

PC RESO 19-002 Conditions of Approval

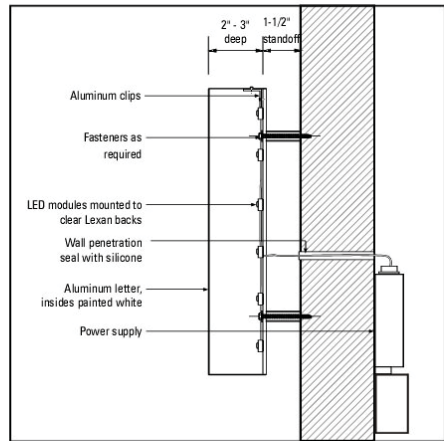
- In the event that a business occupying space within The Shops at Lone Tree Village is closed for more than 60 days, the related building and monument signage shall be removed by the property owner.

- Where signs have been removed, building surfaces shall be repaired or resurfaced to ensure a high quality finish.

-The three freestanding monument signs shall be installed on private property so as not to encroach within the public right-of-way.

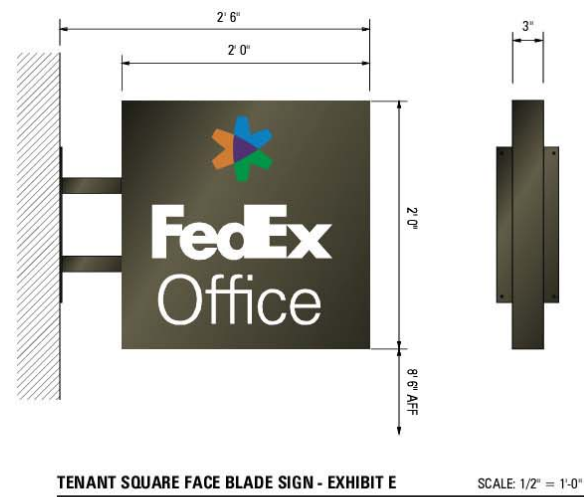
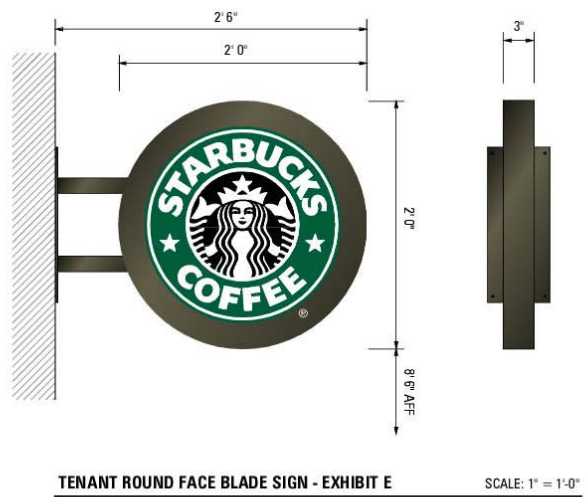


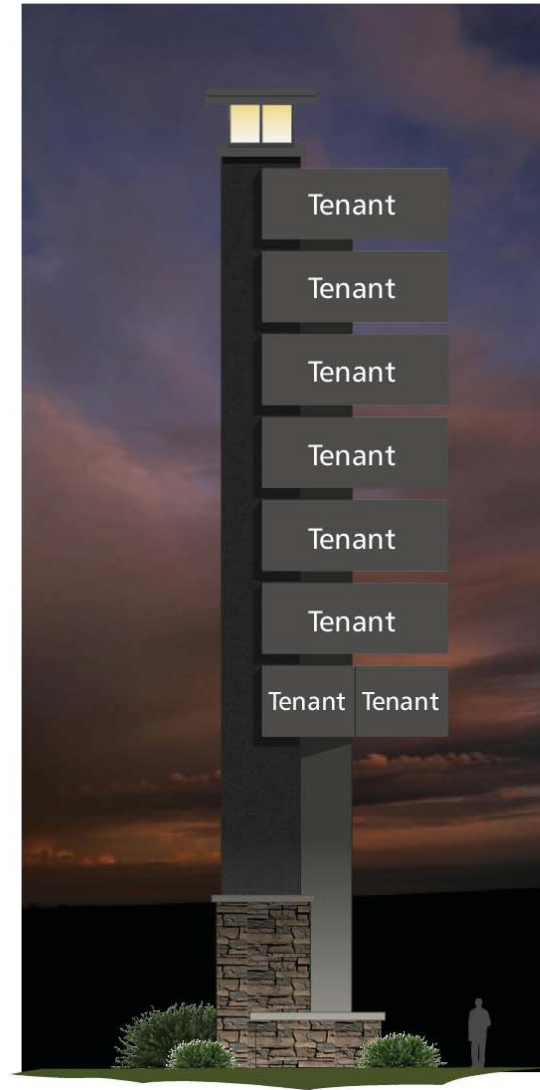
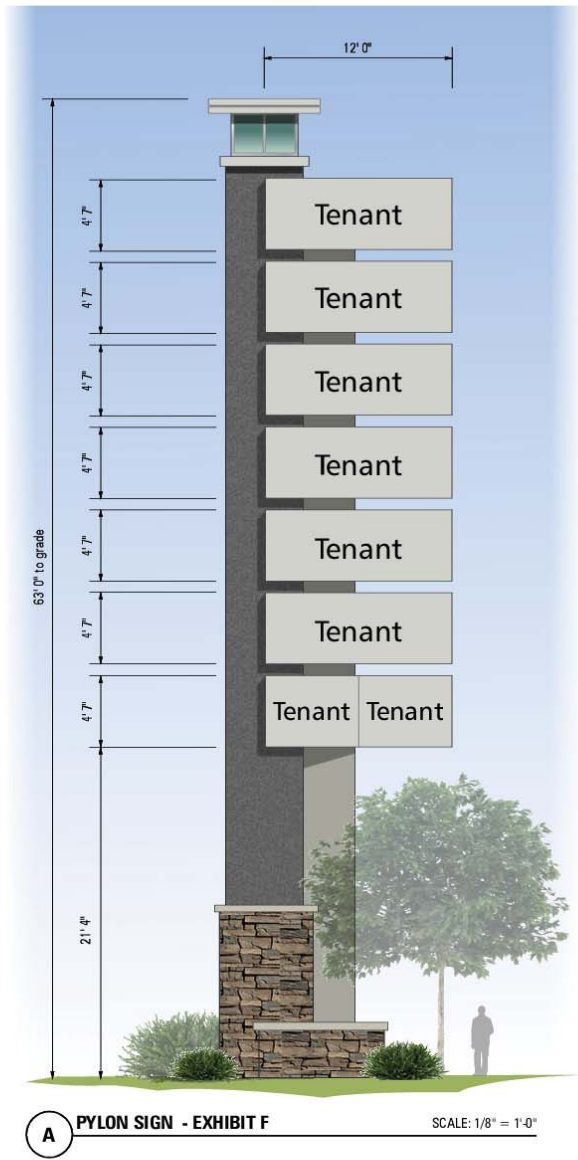
FACE LIT LETTER SECTION - LED NOT TO SCALE



HALO LIT LETTER SECTION - LED NOT TO SCALE

The Shops at Lone Tree Village





Attachment: Shops at Lone Tree Village MSP project plans (1792 : The Shops at Lone Tree Village Master Sign Program)

The Shops at Lone Tree Village



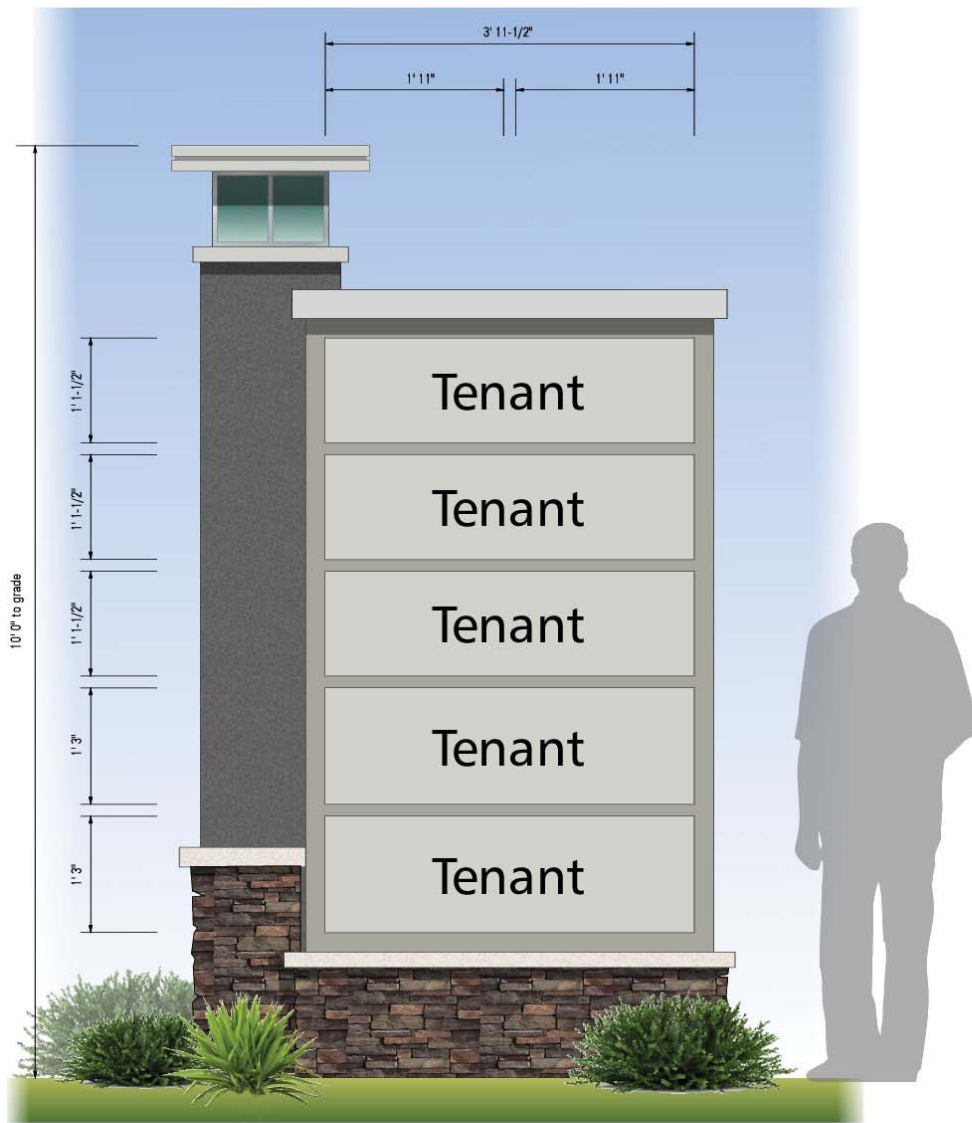
A PHOTO OVERLAY - FACING SOUTH NOT TO SCALE



A PHOTO OVERLAY - FACING SOUTH NOT TO SCALE

Attachment: Shops at Lone Tree Village MSP project plans (1792 : The Shops at Lone Tree Village Master Sign Program)

The Shops at Lone Tree Village

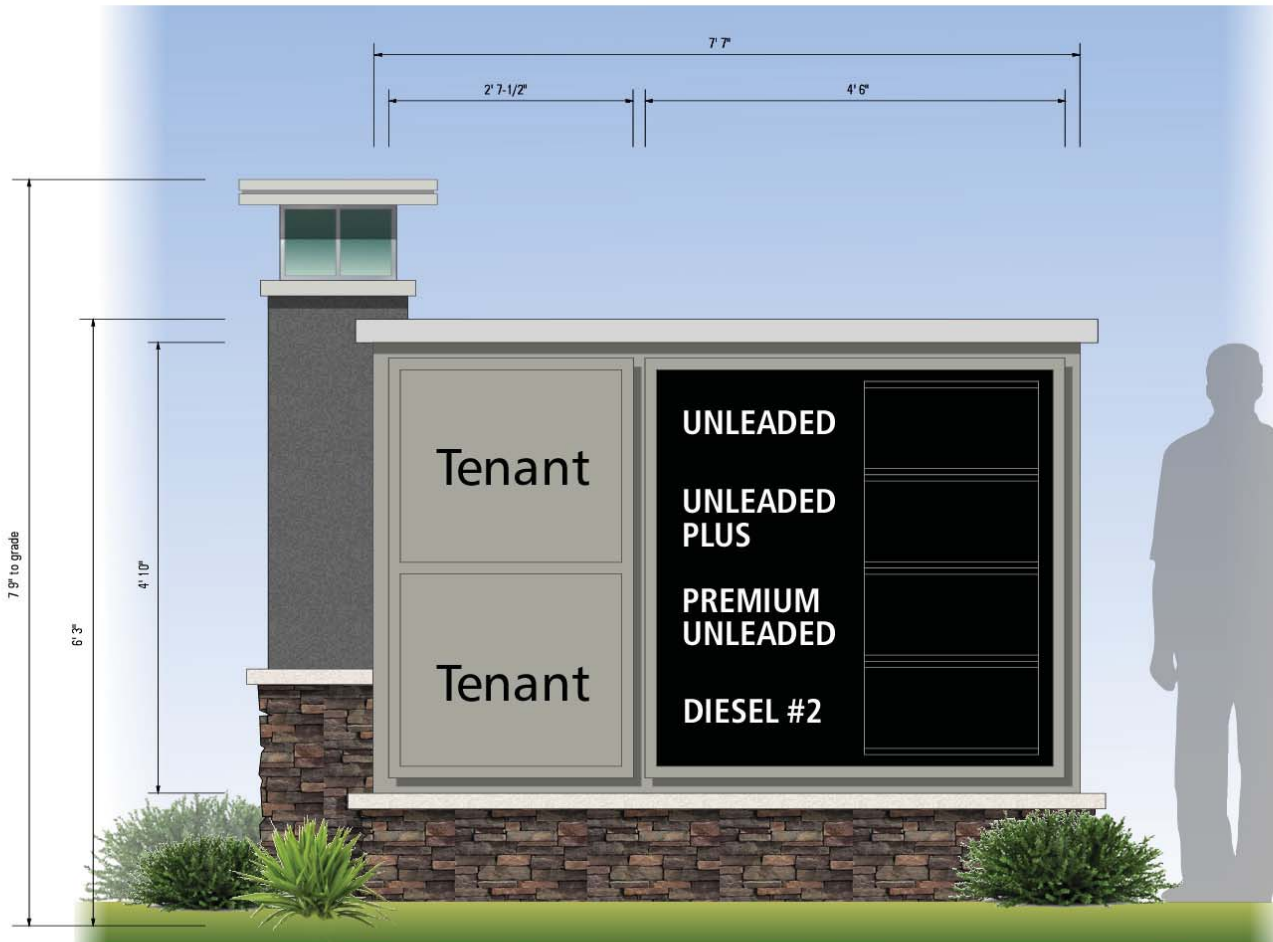


B MONUMENT SIGN - EXHIBIT G

SCALE: 3/4" = 1'-0"

Attachment: Shops at Lone Tree Village MSP project plans (1792 : The Shops at Lone Tree Village Master Sign Program)

The Shops at Lone Tree Village



C

SINGLE TENANT MONUMENT SIGN (PAD D) - EXHIBIT H

SCALE: 3/4" = 1'-0"

Attachment: Shops at Lone Tree Village MSP project plans (1792 : The Shops at Lone Tree Village Master Sign Program)



EAST ELEVATION - BUILDING A

NOT TO SCALE

Note: Final sign location subject to change.



WEST ELEVATION - BUILDING A

NOT TO SCALE



NORTH ELEVATION - BUILDING A

NOT TO SCALE

Note: Final sign location subject to change.

Note: See General Sign Guidelines Section "Anchor Tenants" (Zone 1)

The Shops at Lone Tree Village



EAST ELEVATION - PAD B & C

NOT TO SCALE



NORTH ELEVATION - PAD B

NOT TO SCALE



SOUTH ELEVATION - PAD B

NOT TO SCALE

Note: See General Sign Guidelines Section "End Cap Tenants & In-line Tenants" (Zone 3)

The Shops at Lone Tree Village



WEST ELEVATION - PAD B & C

NOT TO SCALE

Note: Final sign locations subject to change.



NORTH ELEVATION - PAD C

NOT TO SCALE

Note: Final sign location subject to change.



SOUTH ELEVATION - PAD C

NOT TO SCALE

Note: Final sign location subject to change.

Note: See General Sign Guidelines Section "End Cap Tenants & In-line Tenants" (Zone 3)

The Shops at Lone Tree Village



WEST ELEVATION - PAD D

NOT TO SCALE

Note: Final sign location subject to change.



NORTH ELEVATION - PAD D

NOT TO SCALE



EAST ELEVATION - PAD D

NOT TO SCALE

Note: Final sign location subject to change.



SOUTH ELEVATION - PAD D

NOT TO SCALE

Note: See General Sign Guidelines Section "Single PAD Restaurant/Retail Tenants" (Zone 2)

The Shops at Lone Tree Village



NORTH ELEVATION - PAD F

NOT TO SCALE

Note: Final sign location subject to change.



WEST ELEVATION - PAD F

NOT TO SCALE



SOUTH ELEVATION - PAD F

NOT TO SCALE

Note: Final sign location subject to change.



EAST ELEVATION - PAD F

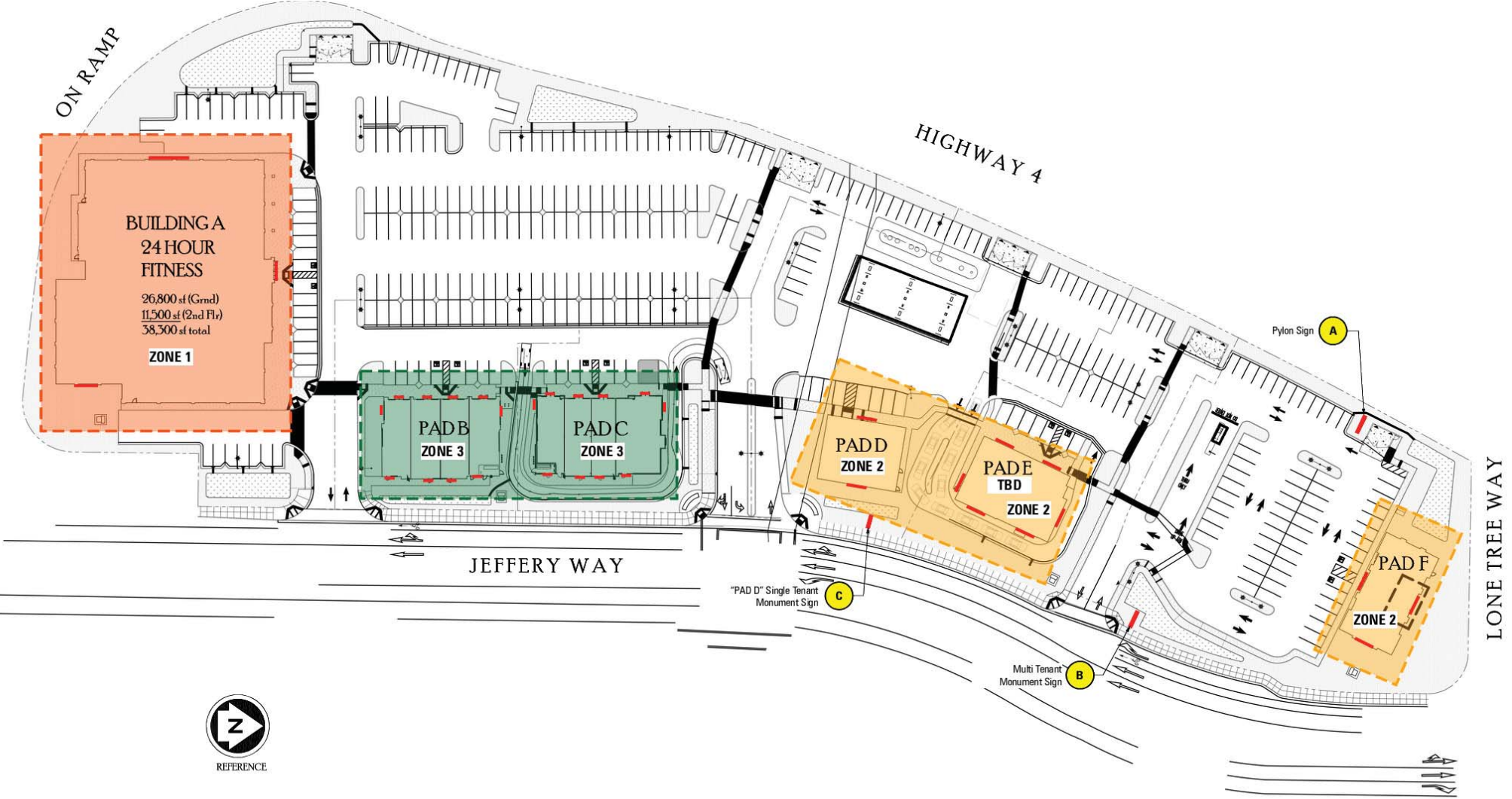
NOT TO SCALE

Note: Final sign location subject to change.

Note: See General Sign Guidelines Section "Single PAD Restaurant/Retail Tenants" (Zone 2)

Attachment: Shops at Lone Tree Village MSP project plans (1792 : The Shops at Lone Tree Village Master Sign Program)

The Shops at Lone Tree Village



Attachment: Shops at Lone Tree Village MSP project plans (1792 : The Shops at Lone Tree Village Master Sign Program)

The Shops at Lone Tree Village

SIGN SUMMARY

| Site Signage (Freestanding) | Quantity | Size | Type | Location |
|------------------------------------------|--------------------|----------------------------------------------------------|-----------------------------------------------------------------------------------------------------------------------|--------------------------------------------------|
| A - Project ID Tenant Pylon Sign | One (1) | 63' 0" OAH | Freestanding double face pylon sign. All tenant graphics to be push thru w/ LED illumination | Corner of Lonetree Way & Highway 4 |
| B - Multi Tenant Monument Sign | One (1) | 10' 0" OAH | Freestanding double face monument sign. All tenant graphics to be push thru w/ LED illumination | Main Entrance to Center between Pad E and F |
| C - Single Tenant Monument Sign | One (1) | 7' 9" OAH | Freestanding double face monument sign with electronic gas price. Tenant graphics to be push thru w/ LED illumination | Entrance to Center at Pad D |
| Building Signage (Illum. Letters) | Quantity | Square Footage | Type | Building Location |
| Building A | Three (3) | 200 square feet per sign (See Sign Design Guidelines) | Face or halo illuminated letters/logo. Maximum sign area of 11' 0" x 35' 0" per sign | North, West & East |
| PAD B - End Cap Tenant | Six (6) | 40 square feet per sign (See Sign Design Guidelines) | Face or halo illuminated letters/logo. Maximum sign area of 2' 0" x 20' 0" per sign | North, South, East & West |
| PAD B - In-line Tenant | Four (4) | 40 square feet per sign (See Sign Design Guidelines) | Face or halo illuminated letters/logo. Maximum sign area of 2' 0" x 20' 0" per sign | East & West |
| PAD C - End Cap Tenant | Six (6) | 40 square feet per sign (See Sign Design Guidelines) | Face or halo illuminated letters/logo. Maximum sign area of 2' 0" x 20' 0" per sign | North, South, East & West |
| PAD C - In-line Tenant | Four (4) | 40 square feet per sign (See Sign Design Guidelines) | Face or halo illuminated letters/logo. Maximum sign area of 2' 0" x 20' 0" per sign | East & West |
| PAD D - Single Pad Tenant | Two (2) | 52 square feet per sign (See Sign Design Guidelines) | Face or halo illuminated letters/logo. Maximum sign area of 2' 6" x 20' 0" per sign | East & West |
| PAD E - End Cap Tenant | Six (6) | 40 square feet per sign (See Sign Design Guidelines) | Face or halo illuminated letters/logo. Maximum sign area of 2' 0" x 20' 0" per sign | North, South, East & West |
| PAD F - Single Pad Tenant | Three (3) | 52 square feet per sign (See Sign Design Guidelines) | Face or halo illuminated letters/logo. Maximum sign area of 2' 6" x 20' 0" per sign | North, South & East |
| Building Signage (Blade Sign) | Quantity | Square Footage | Type | Building Location |
| Blade Signs | One (1) per tenant | 4 square feet per sign (See Sign Design Guidelines) | Double face non-illuminated projecting sign | Located at primary entrance of each tenant space |



The Shops at Lone Tree Village

PYLON SIGN STUDY

Prepared for:

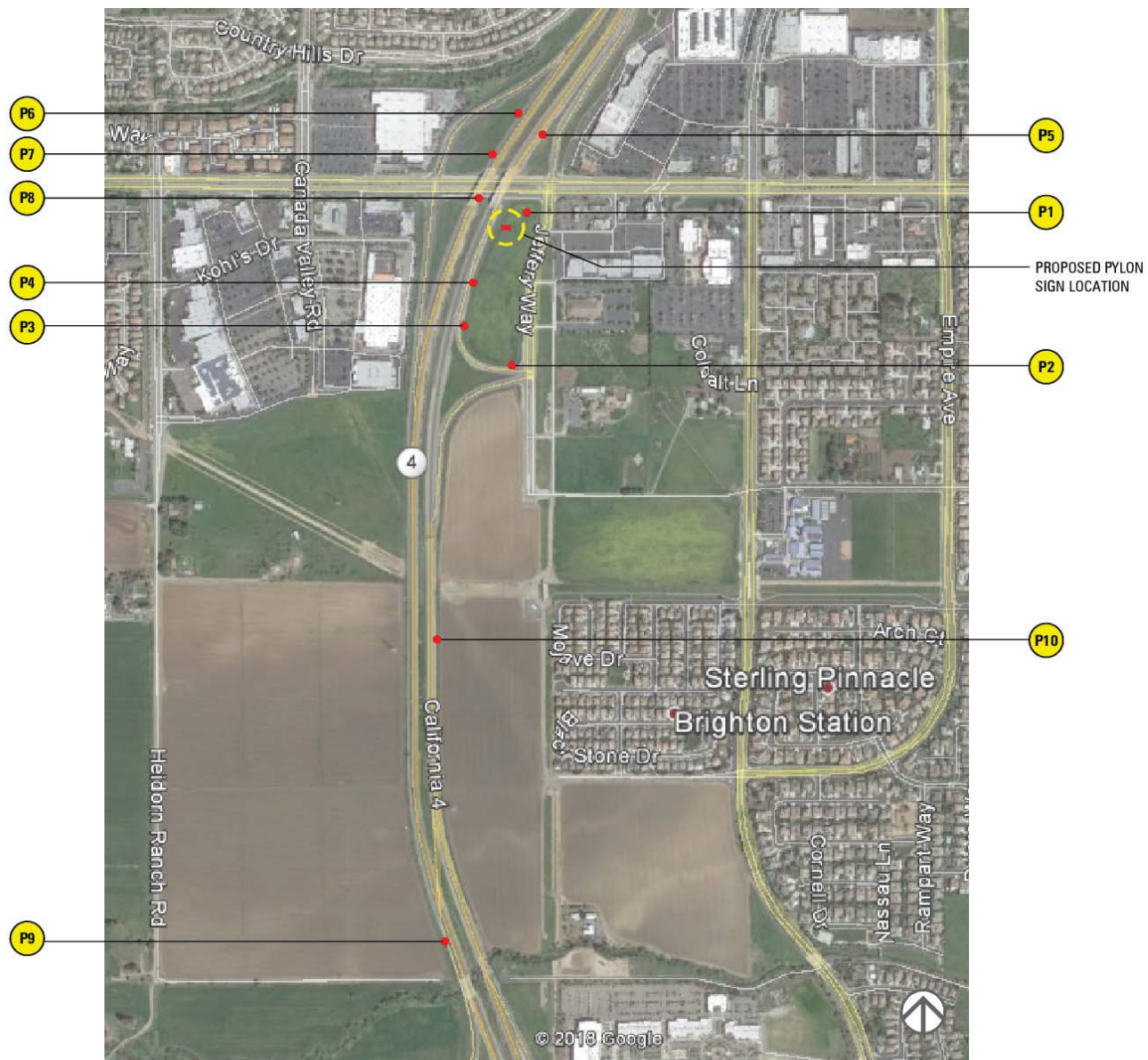


Tekin & Associates
 2727 LBJ Freeway, Suite 785
 Dallas, Tx 75234
 T. 469.458.0485
 www.tekindevelopment.com

Prepared by:



Arrow Sign Company
 1051 48th Avenue
 Oakland, Ca 94601
 T. 510.533.7693
 F. 510.533.0815
 www.arrowsignco.com



Attachment: Shops at Lone Tree Village MSP project plans (1792 : The Shops at Lone Tree Village Master Sign Program)

The Shops at Lone Tree Village



P1 SITE STUDY PHOTO - FACING WEST

NOT TO SCALE



P2 SITE STUDY PHOTO - FACING NORTH

NOT TO SCALE



P3 SITE STUDY PHOTO - FACING NORTH

NOT TO SCALE



P4 SITE STUDY PHOTO - FACING NORTH

NOT TO SCALE

Attachment: Shops at Lone Tree Village MSP project plans (1792 : The Shops at Lone Tree Village Master Sign Program)

The Shops at Lone Tree Village



P5 SITE STUDY PHOTO - FACING SOUTH NOT TO SCALE



P6 SITE STUDY PHOTO - FACING SOUTH NOT TO SCALE



P7 SITE STUDY PHOTO - FACING SOUTH NOT TO SCALE



P8 SITE STUDY PHOTO - FACING EAST NOT TO SCALE

Attachment: Shops at Lone Tree Village MSP project plans (1792 : The Shops at Lone Tree Village Master Sign Program)

The Shops at Lone Tree Village



P9 SITE STUDY PHOTO - FACING NORTH

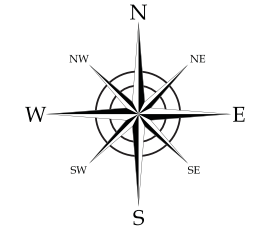
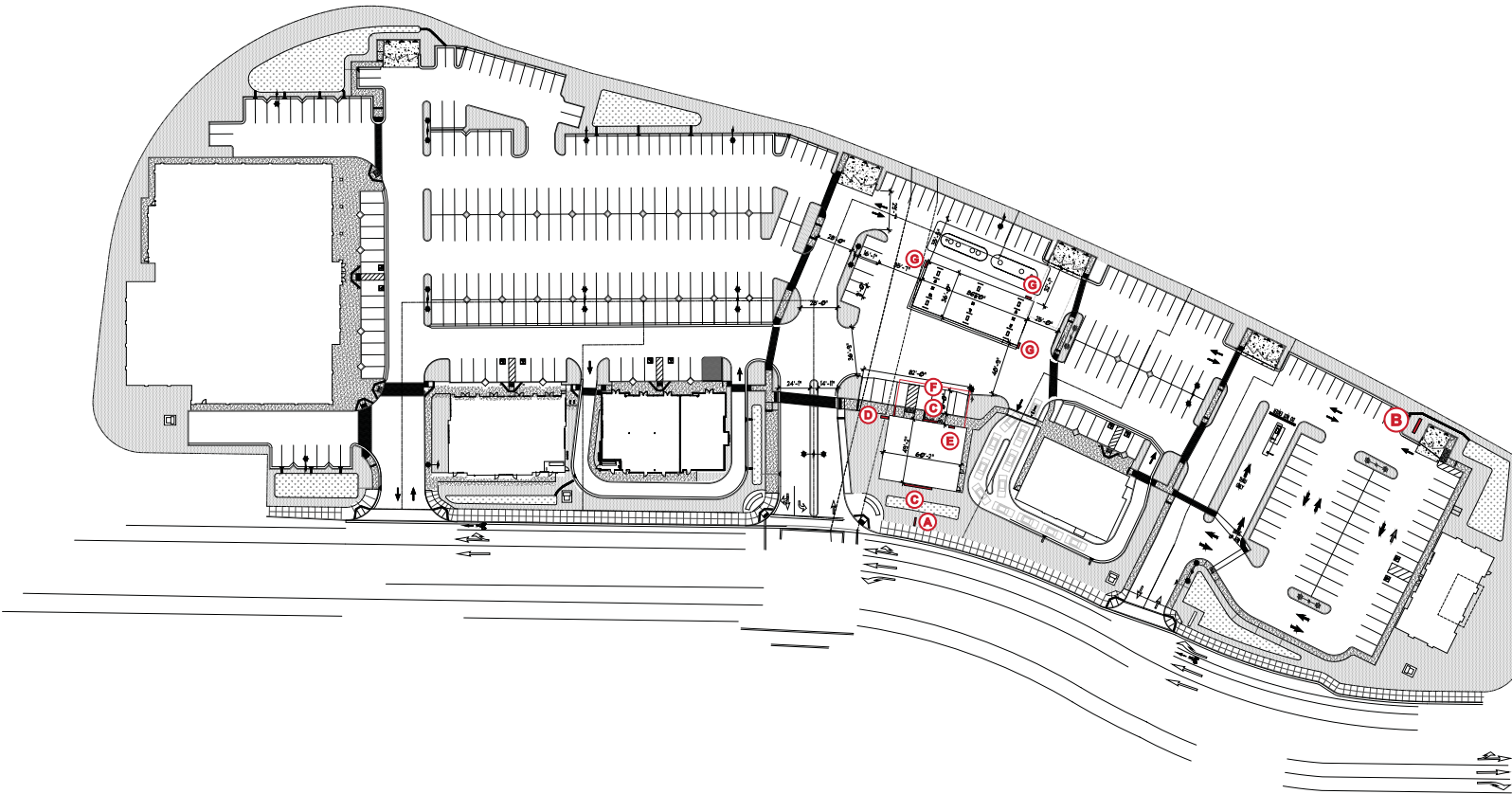
NOT TO SCALE



P10 SITE STUDY PHOTO - FACING NORTH

NOT TO SCALE

The Shops at Lone Tree Village




| | |
|----------|-----------------------|
| A | Monument Sign |
| B | High Rise Pylon Faces |
| C | 36" Channel Letters |
| D | P16 Projecting Sign |
| E | Interior ATM Sign |
| F | Window Graphics |
| G | W9 Canopy Signs |

Fuel/service stations are typically allowed a total of three signs mounted either on the building or in the canopy, in addition to the monument/pricing sign. The master sign program process can usually result in another building/canopy - mounted sign, depending on the site design and sign sizes. The building architecture really needs to be approved before this is integrated into the sign program for processing through the city.

Site Plan
1" = 90'-0"

harbinger
sign of the future
5300 Shad Road, Jacksonville, FL 32257 • 904.268.4681
2301 Ohio Dr, Plano, TX. 32257 • 972.905.9450

 7-Eleven #1043581
Highway 4 @
Lone Tree Way
Brentwood, California 94516

SVE7154-RI
F:\Customers\7 Eleven\Art
\SVE7154-RI #1043581.cdr

| date | rev. | description | designer |
|----------|------|----------------------|----------|
| 07.18.18 | 00 | Original Concept | mh |
| 07.26.18 | RI | Revised sign package | mh |
| | | | |
| | | | |
| | | | |

CDR: jr
Designer: mh

DPM: aa
RCC: aa
RER: aa

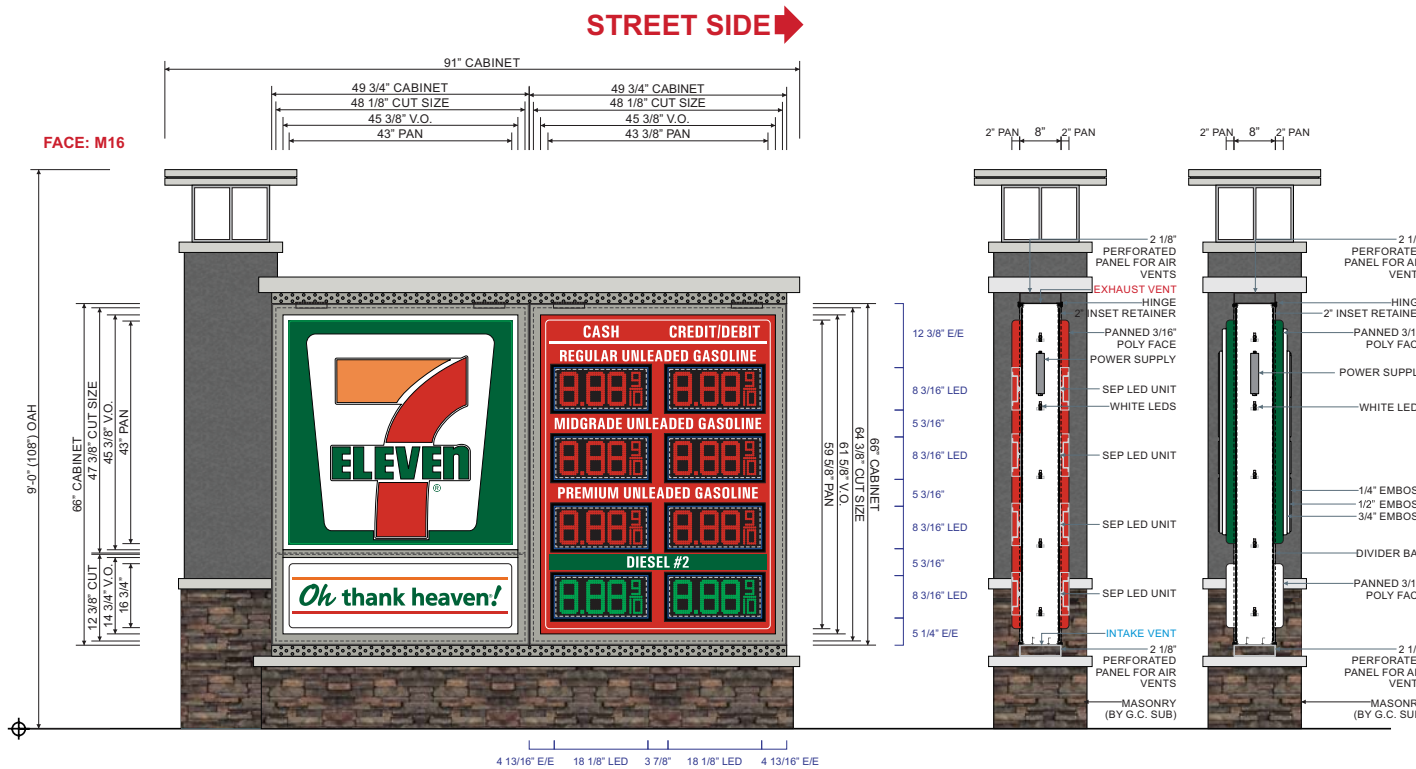
Page: 1

customer approval _____ date: _____



THE SIGNS ON THESE PAGES HAVE BEEN DESIGNED TO MEET OR EXCEED ALL APPLICABLE CODES OR REQUIREMENTS OF THE IBC-2018 AND/OR THE 2014 F...

THIS DESIGN IS FOR THE SOLE PURPOSE OF ILLUSTRATION & CONCEPT DESIGN. THIS FILE IS NOT TO BE USED FOR PRODUCTION AND/OR FABRICATION. THIS DESIGN IS THE SOLE PROPERTY OF HARBINGER AND MAY NOT BE USED OR DUPLICATED IN ANY FORM WITHOUT THE EXPRESS WRITTEN PERMISSION OF HARBINGER.



ONE (1) **CUSTOM M16 / OTH D/F** INTERNALLY ILLUMINATED SIGN CABINET.
 8" DEEP EXTRUDED ALUM. CABINET WITH 2" INSET HINGED RETAINERS & 1 1/2" DIVIDER BARS. ALL TO BE PAINTED **MASTER PLAN GRAY (TBD)**. CABINET TO BE INTERNALLY ILLUMINATED W/ WHITE LEDS. 2" INSET RETAINERS TO BE HINGED ON ONE SIDE OF CABINET.

STANDARD M16 FACES: 3/16" THICK PAN FORMED & EMBOSSED WHITE POLYCARBONATE FACES WITH TRANSLUCENT VINYL GRAPHICS APPLIED FIRST SURFACE.
 CUSTOM OTH FACES: 3/16" THICK PAN FORMED WHITE POLYCARBONATE FACES WITH TRANSLUCENT VINYL GRAPHICS APPLIED FIRST SURFACE.

ONE (1) **CUSTOM L16G4D-CA D/F** INTERNALLY ILLUMINATED SIGN CABINET WITH RED & GREEN LED UNITS.
 8" DEEP EXTRUDED ALUM. CABINET WITH 2" INSET HINGED RETAINERS TO BE PAINTED **MASTER PLAN GRAY (TBD)**. CABINET TO BE INTERNALLY ILLUMINATED W/ WHITE LEDS. 2" INSET RETAINERS TO BE HINGED ON BOTH SIDES OF CABINET.

CUSTOM L16 FACES: 3/16" THICK PAN FORMED CLEAR POLYCARBONATE FACES BACK SPRAYED PMS 485 RED THEN PMS WHITE W/ 3M 3630-26 GREEN TRANSLUCENT VINYL & 3M 7725-12 BLACK VINYL TRIM AROUND LED WINDOW APPLIED SECOND SURFACE.

PROPOSED WITH 6" SEP PRICE-VISION RED & GREEN LED UNITS.

VINYL SPECS:
 3M 3630-44 ORANGE,
 3M 3630-33 RED,
 3M 3630-26 GREEN,
 3M 7725-12 BLACK
 PAINT SPECS:
 PMS 485 RED,
 PMS WHITE,
MASTER PLAN GRAY (TBD)

PROVIDE 2 1/8" PERFORATED PANEL SECTION FINISHED **MASTER PLAN GRAY (TBD)** TO FILL/PROVIDE VENTILATION SPACE ABOVE & UNDERNEATH CABINET FOR AIR FLOW VENTS.

NOTE: MONUMENT SIGN SHALL BE CONSTRUCTED OF THE SAME PRIMARY MASONRY MATERIALS AS THE FRONT BUILDING FACADE OR THE PRINCIPAL OR MAIN BUILDING ON THE SAME LOT OR SHALL BE STONE OR BRICK AND SHALL BE SIMILAR ARCHITECTURAL STYLE.

NOTE: ALL BRICK/MASONRY TO BE PROVIDED BY GC'S SUBCONTRACTOR.

Front Elevation & Side Detail - Custom M16 / L16G4D / OTH - Monument Sign Structure - Sign A
 1/2" = 1'-0"

Display Square Footage (Cabinets Combined): 45.6



7-Eleven #38737 (1043581)
 Highway 4 @
 Lone Tree Way
 Brentwood, California 94516

SVE7154-R5

F:\Customers\7 Eleven\Art
 \SVE7154-R5 #38737 (1043581).cdr

| date | rev. | description | designer |
|----------|------|------------------------------------------------------------------|----------|
| 07.18.18 | 00 | Original Concept | mh |
| 07.26.18 | R1 | Revised sign package | mh |
| 10.24.18 | R2 | Revised sign package per new building elevations. | mh |
| 11.01.18 | R3 | Revised monument sign option | mh |
| 11.05.18 | R4 | Revised removing sign A option 1 moved sign B to parcel #4 spot. | mh |
| 01.08.19 | R5 | Revised canopy to 2x2 cabinets, removed striping | mh |

CDR: jr
 Designer: mh

DPM: aa
 RCC: aa
 RER: aa

Page: 2

customer approval _____ date: _____

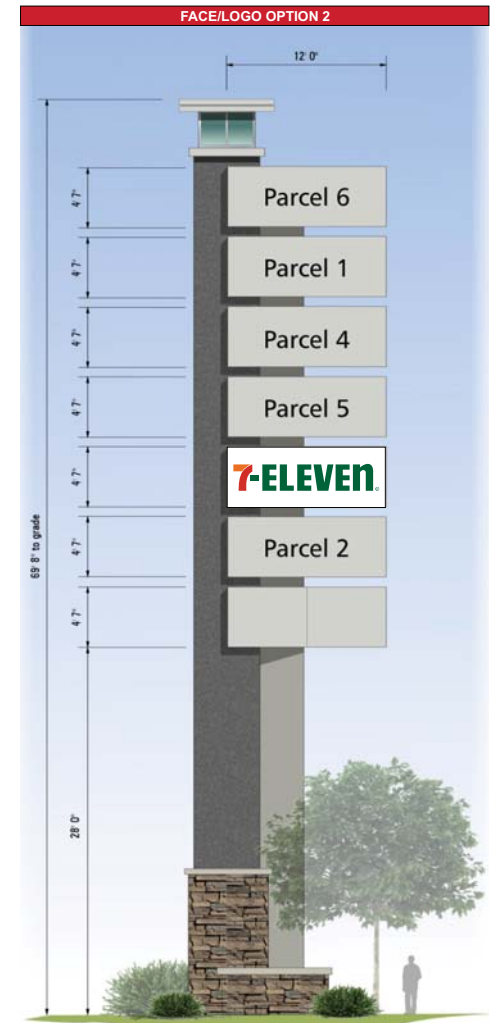
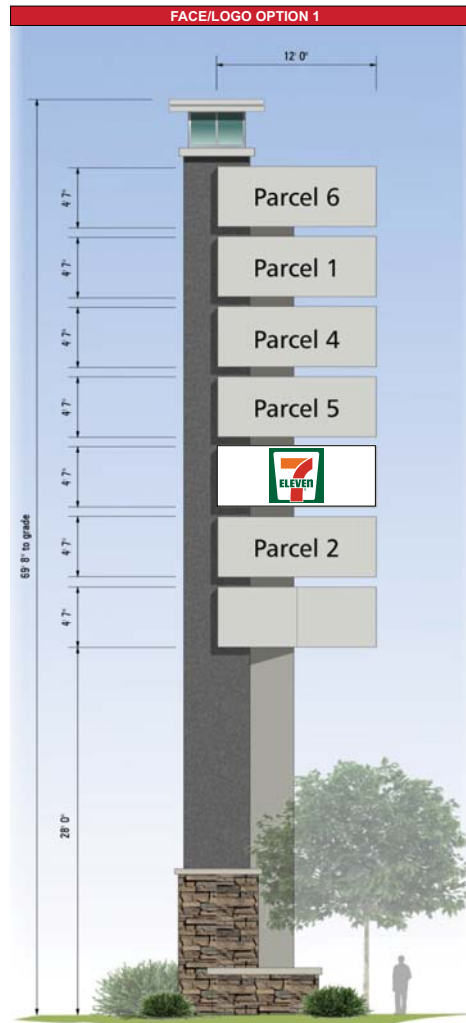


THE SIGNS ON THESE PAGES HAVE BEEN DESIGNED TO MEET OR EXCEED ALL APPLICABLE CODES OR REQUIREMENTS OF THE IBC-2018 AND OF THE 2014 F...

Attachment: Shops at Lone Tree Village MSP project plans (1792) : The Shops at Lone Tree Village Master Sign Program

THIS DESIGN IS FOR THE SOLE PURPOSE OF ILLUSTRATION & CONCEPT DESIGN. THIS FILE IS NOT TO BE USED FOR PRODUCTION AND/OR FABRICATION. THIS DESIGN IS THE SOLE PROPERTY OF HARBINGER AND MAY NOT BE USED OR DUPLICATED IN ANY FORM WITHOUT THE EXPRESS WRITTEN PERMISSION OF HARBINGER.

Pylon sign comments are the same as on the overall sign program. Individual sign faces should be composed of aluminum panels and either cut-out or push-through logos/lettering.



TWO (2) CUSTOM HIGH RISE SIGN STRUCTURE TENANT PANELS.
 3/16" THICK FLAT WHITE POLYCARBONATE FACES W/ TRANSLUCENT VINYL GRAPHICS APPLIED FIRST SURFACE.
 VINYL SPECS:
 3M 3630-44 ORANGE,
 3M 3630-33 RED,
 3M 3630-26 GREEN
 NOTE: EXACT CABINET FABRICATION DETAILS ARE TO BE DETERMINED.
 NOTE: SIZE SHOWN PER MASTER SIGN PROGRAM.
 NOTE: EXACT FACE CONSTRUCTION WILL VARY AFTER TECHNICAL DRAWINGS.

Front Elevation & Side Detail - Custom Tenant Panels - High Rise Pylon Sign Structure - Sign B
 1/2" = 1'-0"

Display Square Footage (Cabinet): 54.9



5300 Shad Road, Jacksonville, FL 32257 • 904.268.4681
 2301 Ohio Dr, Plano, TX. 32257 • 972.905.9450



7-Eleven #1043581
 Highway 4 @
 Lone Tree Way
 Brentwood, California 94516

SVE7154-RI

F:\Customers\7 Eleven\Art
 \SVE7154-RI #1043581.cdr

| date | rev | description | designer |
|----------|-----|----------------------|----------|
| 07.18.18 | 00 | Original Concept | mh |
| 07.26.18 | 01 | Revised sign package | mh |
| | | | |
| | | | |
| | | | |

CDR: jr
 Designer: mh

DPM: aa
 RCC: aa
 RER: aa

Page: 4

customer approval

date:



THE SIGNS ON THESE PAGES HAVE BEEN DESIGNED TO MEET OR EXCEED ALL APPLICABLE CODES OR REQUIREMENTS OF THE IBC-2018 AND/OR THE 2014

Signs should be well-integrated into the design of the building architecture with sufficient negative space around the signs (in this case, a 30-inch letter height might be better suited to the available space). This will be dependent on the final building designs approved by the Planning Commission.



Storefront Elevation - Signs C, D, E & F
1/8"=1'-0"

| Total Sign Square footage Calculations: | |
|-----------------------------------------|-------------------|
| Allowed Total: | 150.0 sqft |
| Sign C 36 Ch. Letters: | 48.1 sqft |
| Sign C 36 Ch. Letters: | 48.1 sqft |
| Sign D P16 Blade Sign: | 17.2 sqft |
| Total: | 113.4 sqft |



Rear Elevation - Sign C & D
1/8"=1'-0"

harbinger
sign of the future

5300 Shad Road, Jacksonville, FL 32257 • 904.268.4681
2301 Ohio Dr, Plano, TX, 32257 • 972.905.9450



7-Eleven #1043581
Highway 4 @
Lone Tree Way
Brentwood, California 94516

SVE7154-RI

F:\Customers\7 Eleven\Art
\SVE7154-RI #1043581.cdr

| date | rev. | description | designer |
|----------|------|----------------------|----------|
| 07.18.18 | 00 | Original Concept | mh |
| 07.26.18 | 01 | Revised sign package | mh |
| | | | |
| | | | |
| | | | |

CDR: jr
Designer: mh

DPM: aa
RCC: aa
RER: aa

Page: 7

customer approval _____ date: _____



THE SIGNS ON THESE PAGES HAVE BEEN DESIGNED TO MEET OR EXCEED ALL APPLICABLE CODES OR REQUIREMENTS OF THE NEC-2014 AND/OR THE 2014 IBC.

THIS DESIGN IS FOR THE SOLE PURPOSE OF ILLUSTRATION & CONCEPT DESIGN. THIS FILE IS NOT TO BE USED FOR PRODUCTION AND/OR FABRICATION. THIS DESIGN IS THE SOLE PROPERTY OF HARBINGER AND MAY NOT BE USED OR DUPLICATED IN ANY FORM WITHOUT THE EXPRESS WRITTEN PERMISSION OF HARBINGER.



Side (Right) Elevation - Sign D
1/8"=1'-0"



Side (Left) Elevation -
1/8"=1'-0"

harbinger.
sign of the future

5300 Shad Road, Jacksonville, FL 32257 • 904.268.4681
2301 Ohio Dr, Plano, TX, 32257 • 972.905.9450



7-Eleven #1043581
Highway 4 @
Lone Tree Way
Brentwood, California 94516

SVE7154-RI

F:\Customers\7 Eleven\Art
\SVE7154-RI #1043581.cdr

| date | rev. | description | designer |
|----------|------|----------------------|----------|
| 07.18.18 | 00 | Original Concept | mh |
| 07.26.18 | 01 | Revised sign package | mh |
| | | | |
| | | | |
| | | | |
| | | | |

CDR: jr
Designer: mh

DPM: aa
RCC: aa
RER: aa

Page: 8

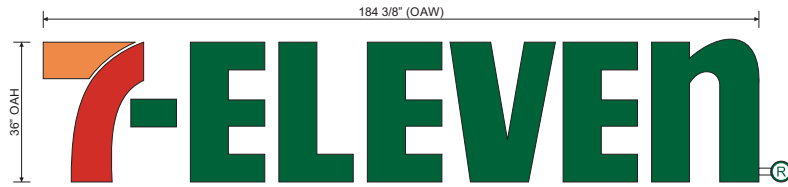
customer approval

date:



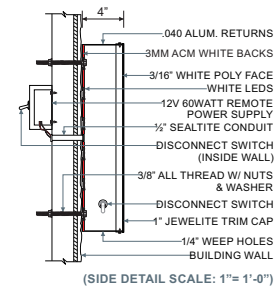
Complies with
UL 48
CSA C22.2 No.207

THE SIGNS ON THESE PAGES HAVE BEEN DESIGNED TO MEET OR EXCEED ALL APPLICABLE CODES OR REQUIREMENTS OF THE IBC-2018 AND/OR THE 2014 F



MANUFACTURE & SHIP TWO (2) SETS OF **CL36REM 36"** INTERNALLY ILLUMINATED REMOTE CHANNEL LETTERS. 3/16" THICK WHITE ACRYLIC FACES W/ TRANSLUCENT VINYL GRAPHICS APPLIED FIRST SURFACE. 4" DEEP ALUMINUM RETURNS PRE-PAINTED **313 DURANODIC BRONZE**. 1" **DURANODIC BRONZE**(JEWELITE) TRIM CAP. LETTERS TO BE INTERNALLY ILLUMINATED W/ WHITE LEDS.

VINYL SPECS: **3M 3630-44 ORANGE, 3M 3630-33 RED, 3M 3630-26 GREEN**
 PAINT SPECS: **313 DURANODIC BRONZE**



Front View & Side Mounting Detail - **CL36REM 36"** Internally Illuminated Remote Channel Letters - **Sign C**

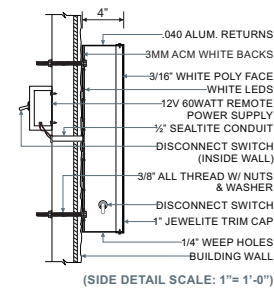
3/8" = 1'-0"

Display Square Footage: **48.1**



ONE (1) SET OF **CL30REM 30"** INTERNALLY ILLUMINATED REMOTE CHANNEL LETTERS. 3/16" THICK WHITE ACRYLIC FACES W/ TRANSLUCENT VINYL GRAPHICS APPLIED FIRST SURFACE. 4" DEEP ALUMINUM RETURNS PRE-PAINTED **313 DURANODIC BRONZE**. 1" **DURANODIC BRONZE**(JEWELITE) TRIM CAP. LETTERS TO BE INTERNALLY ILLUMINATED W/ WHITE LEDS.

VINYL SPECS: **3M 3630-44 ORANGE, 3M 3630-33 RED, 3M 3630-26 GREEN**
 PAINT SPECS: **313 DURANODIC BRONZE**



Front View & Side Mounting Detail - **CL30REM 30"** Internally Illuminated Remote Channel Letters - **Sign D**

3/8" = 1'-0"

Display Square Footage: **32.0**



5300 Shad Road, Jacksonville, FL 32257 • 904.268.4681
 2301 Ohio Dr, Plano, TX. 32257 • 972.905.9450



7-Eleven #38737 (1043581)
 Highway 4 @
 Lone Tree Way
 Brentwood, California 94516

SVE7154-R5

F:\Customers\7 Eleven\Art
 \SVE7154-R5 #38737 (1043581).cdr

| date | rev | description | designer |
|----------|-----|-------------------------------------------------------------------|----------|
| 07.18.18 | 00 | Original Concept | mh |
| 07.26.18 | 01 | Revised sign package | mh |
| 10.24.18 | R2 | Revised sign package per new building elevations. | mh |
| 11.01.18 | R3 | Revised monument sign option | mh |
| 11.05.18 | R4 | Revised removing sign A option 1. moved sign B to parcel #4 spot. | mh |
| 01.08.19 | R5 | Revised canopy to 2x2 cabinets, removed striping | mh |

CDR: jr
 Designer: mh

DPM: aa
 RCC: aa
 RER: aa

Page: 4

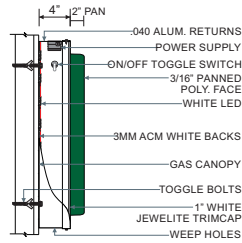
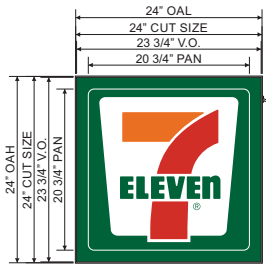
customer approval

date:



Complies with
 UL 48
 CSA C22.2 No.207

THE SIGNS ON THESE PAGES HAVE BEEN DESIGNED TO MEET OR EXCEED ALL APPLICABLE CODES OR REQUIREMENTS OF THE NEC-2014 AND/OR THE 2014 F

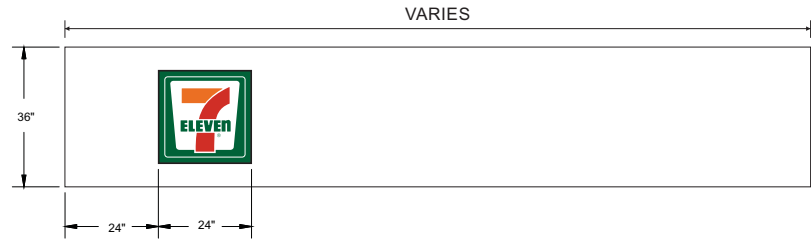


THREE (3) **W2X2CANOPY (00000000)** S/F INTERNALLY ILLUMINATED SIGN CABINETS. 3/16" THICK PAN FORMED WHITE POLYCARBONATE FACE W/ TRANSLUCENT VINYL GRAPHICS APPLIED FIRST SURFACE. 4" DEEP ALUM. RETURNS TO BE PAINTED **PMS WHITE LOW GLOSS**. 1" WHITE (JEWELITE) TRIM CAP. CABINET TO BE INTERNALLY ILLUMINATED W/ WHITE LEDS.

VINYL SPECS: **3M 3630-44 ORANGE, 3M 3630-33 RED, 3M 3630-26 GREEN**
 PAINT SPECS: **PMS WHITE LOW GLOSS**

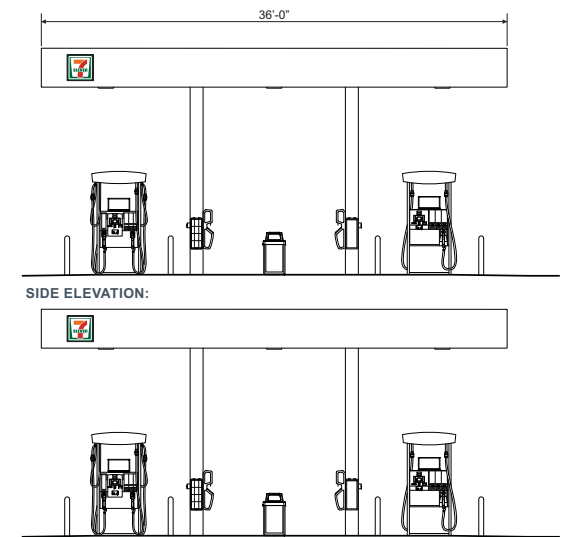
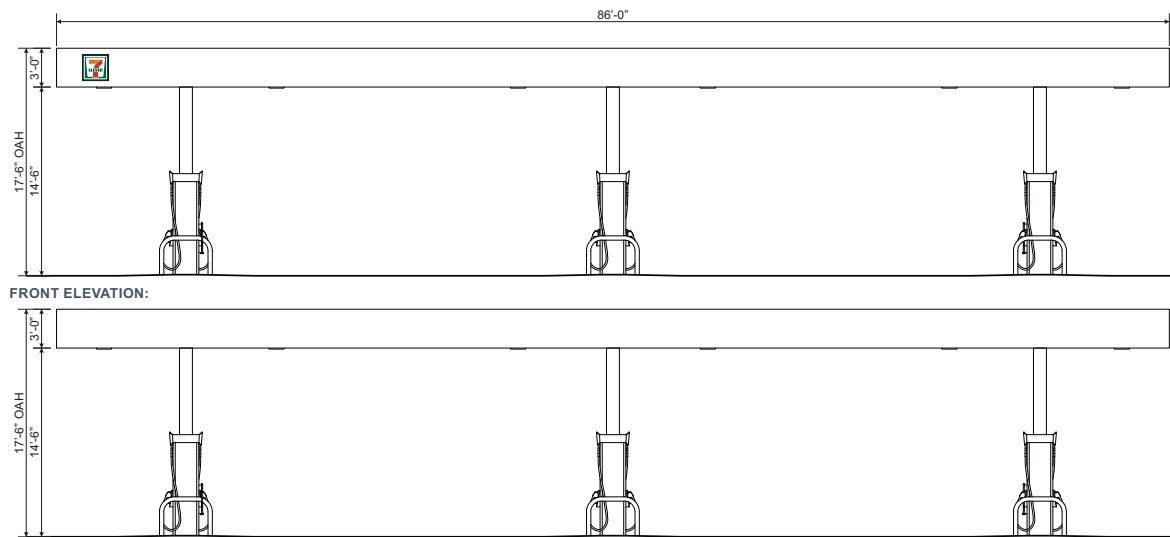
7-ELEVEN LOGO
 DIMENSIONS:
OAH: 18 11/16"
OAL: 17 15/16"

NOTE: SIGN TO BE INSTALLED 2'-0" FROM LEFT EDGE OF GAS CANOPY.



Front Elevation & Side Mounting Detail - **W2X2CANOPY (00000000) Canopy Cabinet - Sign H**
 3/4" = 1'-0" Display Square Footage (Cabinet): **4.0**

Front Elevation - **36" Canopy Height - Sign And Graphics Layout**
 3/8" = 1'-0"



Front and Side Elevation (6MPD Stacked Canopy Configuration) - **Sign H**
 NTS



| date | rev. | description | designer |
|----------|------|-------------------------------------------------------------------|----------|
| 07.18.18 | 00 | Original Concept | mh |
| 07.26.18 | 01 | Revised sign package | mh |
| 10.24.18 | R2 | Revised sign package per new building elevations. | mh |
| 11.01.18 | R3 | Revised monument sign option | mh |
| 11.05.18 | R4 | Revised removing sign A option 1. moved sign B to parcel #4 spot. | mh |
| 01.08.19 | R5 | Revised canopy to 2x2 cabinets, removed striping | mh |





EN13001GA495

- PMS 165 PMS 1797 END 7000
- PMS 342 END 7001

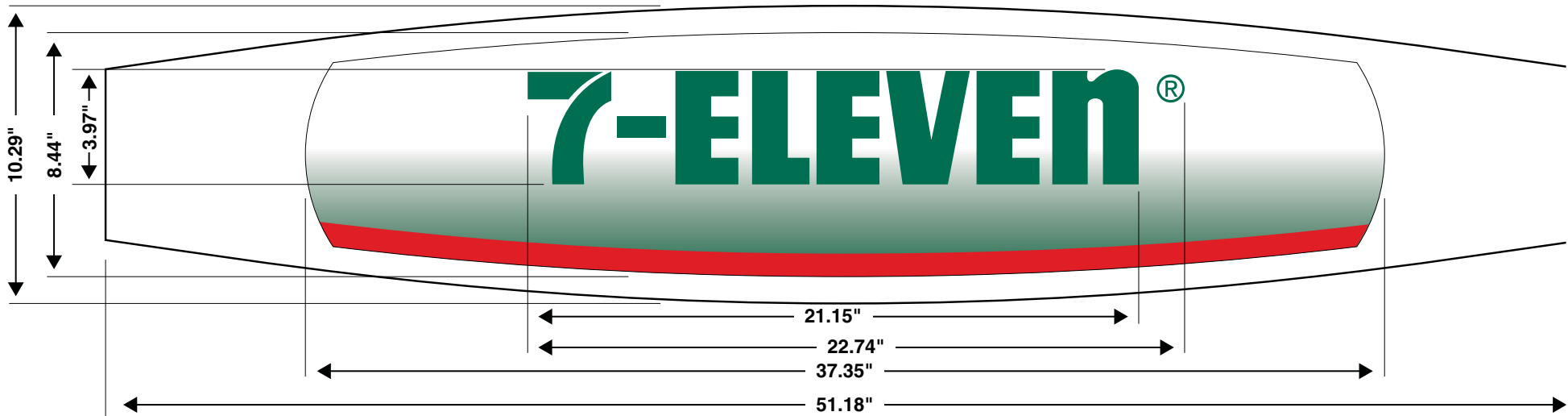
Uses Decal:
EN13001GC495 : 7-11 Full Panel Decal
 center decal vertically and horizontally

Gilbarco Inc.
 7300 West Friendly Avenue
 Greensboro, NC 27420
 www.gilbarco.com



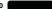



EN13001GA495 Rev: C Customer: 7-11
 Description: Gilbarco® Lower Door Assembly Product: Gilbarco® Encore®
 ECO: 75488-0 Drawn: RH Date: 09/06/06
 All Dimensions are in Millimeters. Dimensional Tolerances: ± .50 Angles: ± 1° Graphic Tolerances: ± .80 Angles: ± 1° Scale: Electronic File Is 1:1
 Revision Changes: Rev C changes orange, red and green to PMS colors RH 79494-1 02/04/14

Gilbarco Inc. Graphics Department will maintain original artwork.
 Colors are to show likeness only and are not to be used for color matching approvals.
 Gilbarco Inc. Confidential: This print is the property of Gilbarco Inc. NO USA. Information hereon
 is confidential and must not be reproduced or released outside Gilbarco Inc. without proper authorization.

Attachment: Shops at Lone Tree Village MSP project plans (1792 : The Shops at Lone Tree Village Master



EN55010GA151

| | | |
|---------------------------------------------------------------------------------------------|----------------------------------------------------------------------------------------------|-----------------------------------------------------------------------------------------------------------------|
|  PMS 165 |  PMS 1797 |  END 7005 |
|  PMS 342 |  END 7001 |  PMS 342 to White gradient |

Uses Decal:
EN55010GK151: 7-11 Decal
 center decal vertically and horizontally

Gilbarco Inc.
 7300 West Friendly Avenue
 Greensboro, NC 27420
 www.gilbarco.com

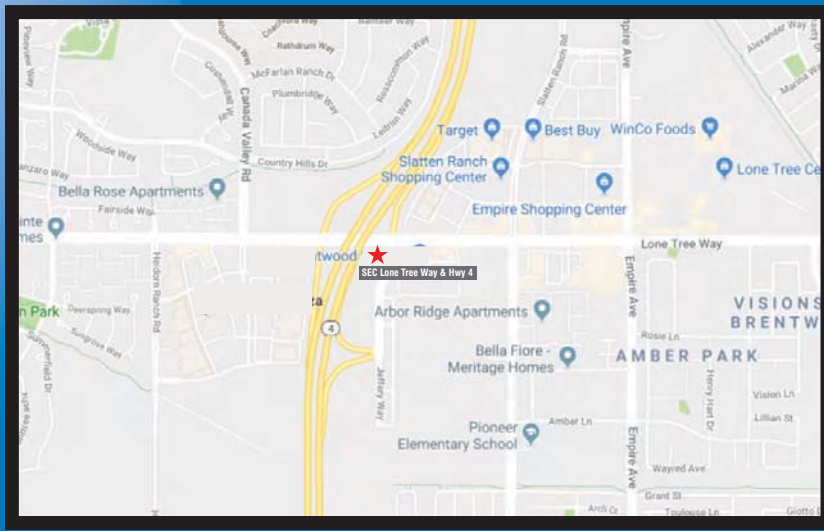
EN55010GA151 Rev. C Customer: 7-11
 Description: Gilbarco Encore 550 canopy Assembly Aluminum Product: Gilbarco® Encore®
 ECO: 78102-0 Drawn: BH Date: 10/13/06
 All Dimensions are in Millimeters. Dimensional Tolerances: ±.50 Angles ± 1° Graphic Tolerances: ±.80 Angles ± 1° Scale: Electronic File is 1:1
 Revision Changes: Rev B changes END 7293 to END 7306 RDh 10/31/06 75634-1
 Rev C changes orange, red and green to PMS colors RH 79494-1 02/04/14
 Gilbarco Inc. Graphics Department will maintain original artwork.
 Colors are to show likeness only and are not to be used for color matching approvals.
 Gilbarco Inc. Confidential! This print is the property of Gilbarco Inc. No U.S.A. Information hereon
 is confidential and must not be reproduced or released outside Gilbarco Inc. without proper authorization.

Attachment: Shops at Lone Tree Village MSP project plans (1792 : The Shops at Lone Tree Village Master



#38200P308739

Lone Tree and Hwy 4
SEC Lone Tree and Hwy 4
Brentwood, CA 94513



4444 Federal Blvd. San Diego CA 92102
Phone: (619) 527-6100 / Fax: (619) 527-6111
signtech.com



JP Morgan Chase Bank
#38200P308739

Lone Tree and Hwy 4
SEC Lone Tree and Hwy 4
Brentwood, CA 94513

Initial Date: 07/25/18
Salesperson: Arthur Navarro
Coordinator: Melanie Priola
Designer: bjones
Scale: As noted

CUSTOMER APPROVAL

Customer Signature _____ Date _____
COPY, COLORS & SIZES

Signtech does NOT provide primary electrical to sign location -
RESPONSIBILITY OF OTHERS!

Customer Signature _____ Date _____

This design is the exclusive property of Signtech and cannot be reproduced in whole or in part, without their prior written approval.

Drawing Number: 18-0135

Project ID: CHASE_38200P308739

Attachment: Shops at Lone Tree Village MSP project plans (1792 : The Shops at Lone Tree Village Master Sign Program)

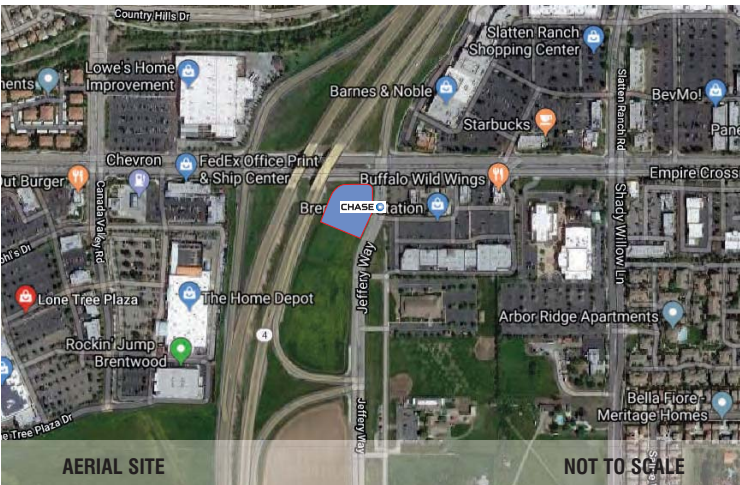
EXTERIOR SIGN LEGEND - ALLOWED

| Elevation | Sign No. | Sign Type | Description | Sq.Ft. |
|-----------|----------|------------------|-------------------------------------------------------|--------|
| South | E.1 | LIF-WBO-30 | 30" White Channel Letters and Logo | 57.6 |
| North | E.2 | LIF-WBO-30 | 30" White Channel Letters and Logo | 57.6 |
| East | E.3 | LIF-WBO-30 | 30" White Channel Letters and Logo | 57.6 |
| West | E.4 | LIF-WBO-30 | 30" White Channel Letters and Logo | 57.6 |
| | E.5 | TC-P-ADA-CA-V-RE | Post Mount Handicap Stall Sign - Van Accessible | |
| | E.6 | TC-P-ADA-CA-RE | Post Mount Handicap Stall Sign | |
| | E.7 | HB-U | Headache Bar | |
| | E.8 | CAN-ATM-SIG-OCT | ATM Signature Canopy w/ Octagon | |
| | E.9 | CUSTOM TC-P-H-RE | Post Mount Do Not Enter Sign - No Branding | |
| | E.10 | CUSTOM TC-P-H-RE | Post Mount Do Not Enter Sign - No Branding | |
| | E.11 | CUSTOM D-2-RE | Non-Illuminated Directional Sign - No Branding | |
| | E.12 | CUSTOM D-2-RE | Non-Illuminated Directional Sign - No Branding | |
| | E.13 | CUSTOM D-2-RE | Non-Illuminated Directional Sign - No Branding | |
| | E.14 | TC-P-SHORT-RE | Non-Illuminated Accessible Lot Entry Sign | |

| | |
|-----------------------|--------|
| Total Proposed Sq Ft | 230.4 |
| Total Allowable Sq Ft | 104 |
| Difference | -126.4 |



SITE PLAN SCALE: 1" = 50'-0"



Signtech
 4444 Federal Blvd. San Diego CA 92102
 Phone: (619) 527-6100 / Fax: (619) 527-6111
 signtech.com



JP Morgan Chase Bank
#38200P308739
 Lone Tree and Hwy 4
 SEC Lone Tree and Hwy 4
 Brentwood, CA 94513

Initial Date: 07/25/18
 Salesperson: Arthur Navarro
 Coordinator: Melanie Priola
 Designer: biones
 Scale: As noted

CUSTOMER APPROVAL

Customer Signature _____ Date _____
COPY, COLORS & SIZES

Signtech does NOT provide primary electrical to sign location - **RESPONSIBILITY OF OTHERS!**

Customer Signature _____ Date _____

This design is the exclusive property of Signtech and cannot be reproduced in whole or in part, without their prior written approval.

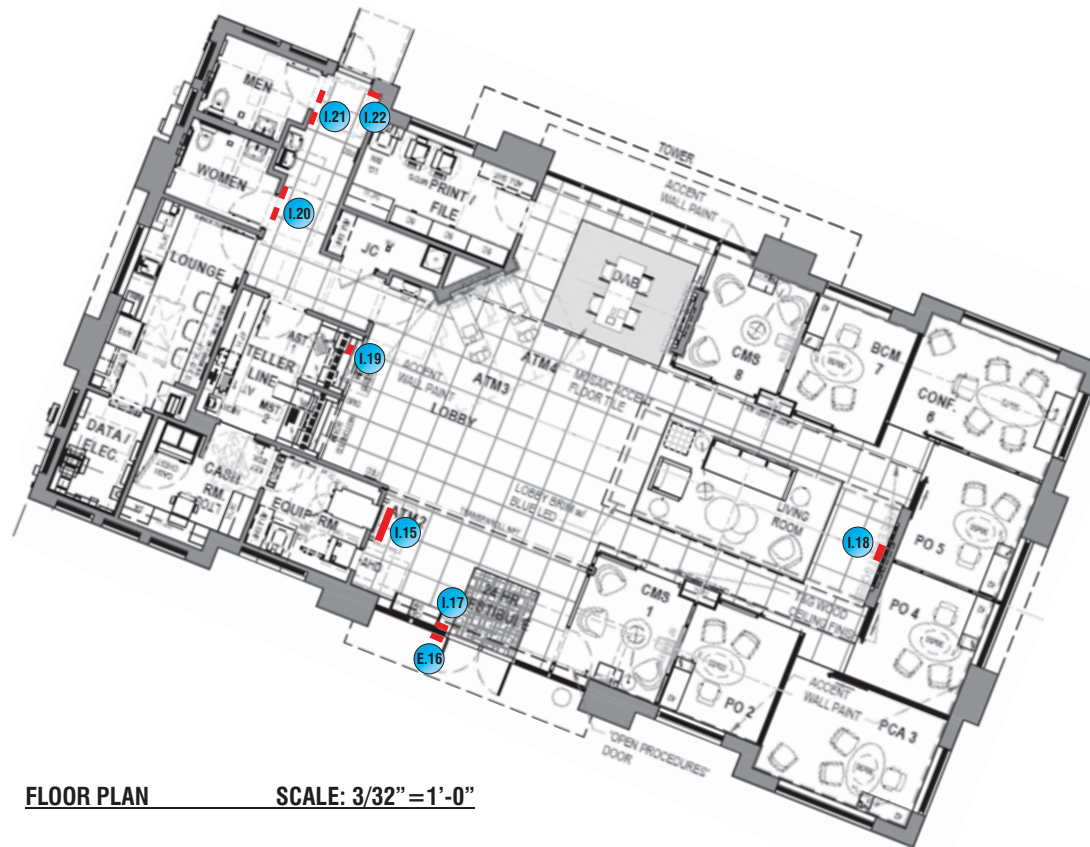
Drawing Number: 18-0135
 Project ID: CHASE_38200P308739

Sign Legend / Site Plan

Attachment: Shops at Lone Tree Village MSP project plans (1792) - The Shops at Lone Tree Village Master Sign Program

INTERIOR SIGN LEGEND

| Elevation | Sign No. | Sign Type | Description | Sq.Ft. |
|-----------|----------------|-----------|-----------------------------------------------|--------|
| I.15 | SUR-TTW-U-4-TP | | Universal Thin-Profile ATM Surround | |
| E.16 | ADA-EP | | ADA Accessible Entrance Plaque | |
| I.17 | ADA-EX | | ADA Exit Plaque | |
| I.18 | AFF-SS-OCT-21 | | Halo-Illuminated Stainless Steel Octagon | |
| I.19 | ADA-TW | | ADA Accessible Teller Window Plaque | |
| I.20 | ADA-RRAG-A-C | | ADA Accessible All-Gender Restroom Plaque Set | |
| I.21 | ADA-RRAG-A-C | | ADA Accessible All-Gender Restroom Plaque Set | |
| I.22 | ADA-EEX | | ADA Emergency Exit Plaque | |



FLOOR PLAN SCALE: 3/32" = 1'-0"



Signtech

4444 Federal Blvd. San Diego CA 92102
 Phone: (619) 527-6100 / Fax: (619) 527-6111
 signtech.com



JP Morgan Chase Bank
 #38200P308739

Lone Tree and Hwy 4
 SEC Lone Tree and Hwy 4
 Brentwood, CA 94513

Initial Date: 07/25/18
 Salesperson: Arthur Navarro
 Coordinator: Melanie Priola
 Designer: biones
 Scale: As noted

CUSTOMER APPROVAL

Customer Signature _____ Date _____

COPY, COLORS & SIZES

Signtech does NOT provide primary electrical to sign location - **RESPONSIBILITY OF OTHERS!**

Customer Signature _____ Date _____

This design is the exclusive property of Signtech and cannot be reproduced in whole or in part, without their prior written approval.

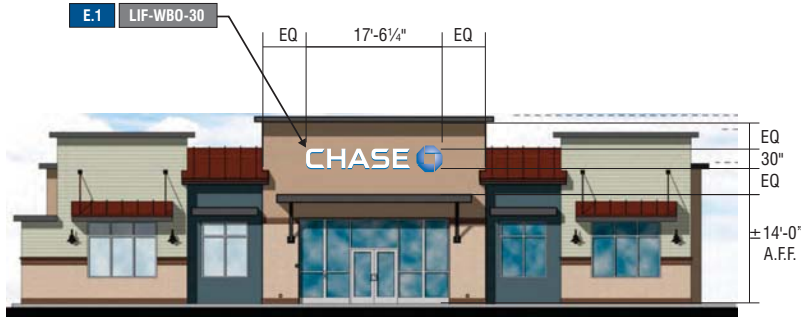
Drawing Number: 18-0135

Project ID: CHASE_38200P308739

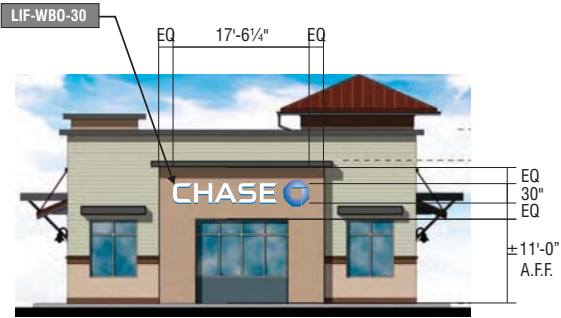
Floor Plan

Attachment: Shops at Lone Tree Village MSP project plans (1792) : The Shops at Lone Tree Village Master Sign Program

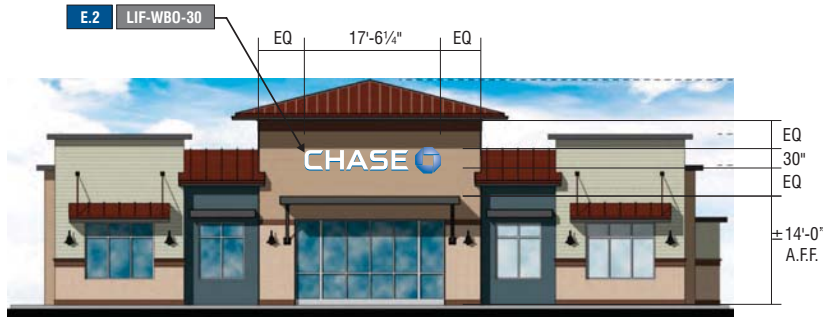
SIGNAGE OVERVIEW



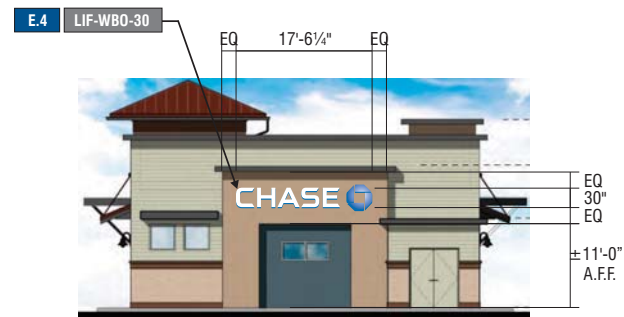
SOUTH ELEVATION SCALE: 1/16" = 1'-0"



EAST ELEVATION SCALE: 1/16" = 1'-0"



NORTH ELEVATION SCALE: 1/16" = 1'-0"



WEST ELEVATION SCALE: 1/16" = 1'-0"

2.b



Signtech

4444 Federal Blvd. San Diego CA 92102
Phone: (619) 527-6100 / Fax: (619) 527-6111
signtech.com



JP Morgan Chase Bank
#38200P308739

Lone Tree and Hwy 4
SEC Lone Tree and Hwy 4
Brentwood, CA 94513

Initial Date: 07/25/18
Salesperson: Arthur Navarro
Coordinator: Melanie Priola
Designer: biones
Scale: As noted

CUSTOMER APPROVAL

Customer Signature _____ Date _____

COPY, COLORS & SIZES

Signtech does NOT provide primary electrical to sign location - **RESPONSIBILITY OF OTHERS!**

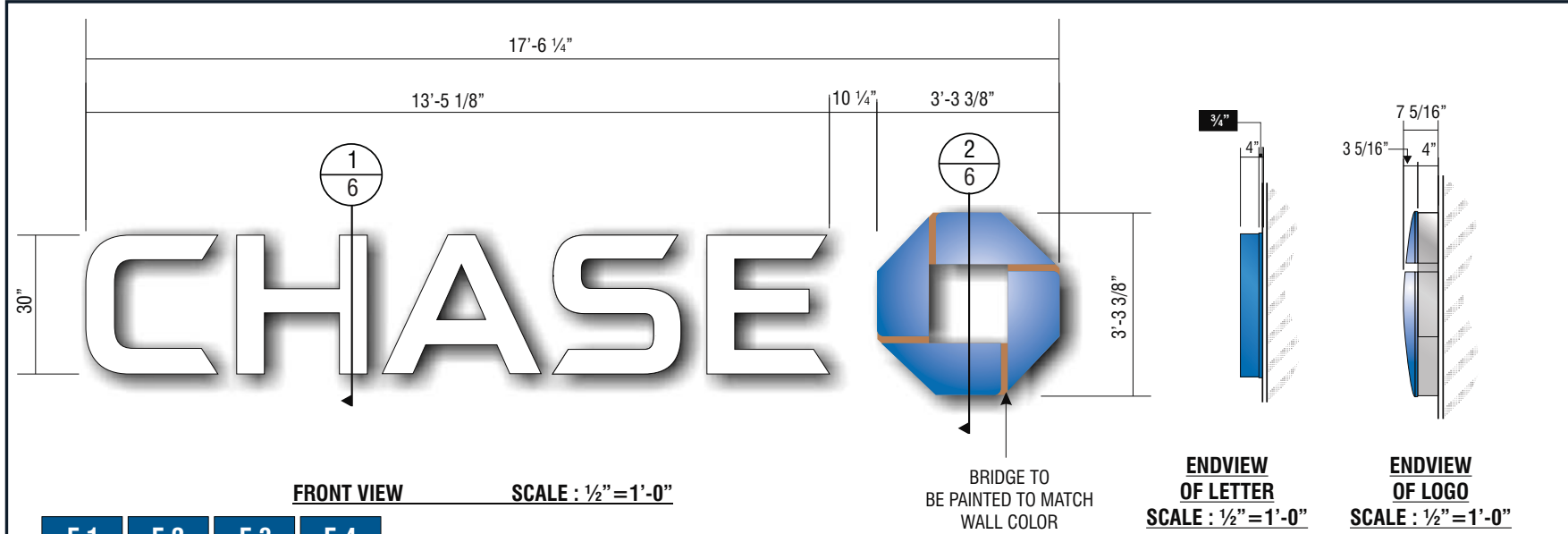
Customer Signature _____ Date _____

This design is the exclusive property of Signtech and cannot be reproduced in whole or in part, without their prior written approval.

Drawing Number: 18-0135

Project ID: CHASE_38200P308739

Attachment: Shops at Lone Tree Village MSP project plans (1792) : The Shops at Lone Tree Village Master Sign Program



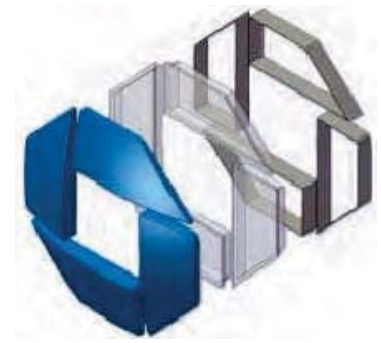
| | | | |
|-----------------------------|-----|-----|-----|
| E.1 | E.2 | E.3 | E.4 |
| SIGN TYPE LIF-WB0-30 | | | |

MANUFACTURE AND INSTALL FOUR (4) SETS OF INTERNALLY-ILLUMINATED CHANNEL LETTERS

LETTERS:
FACE: .177" ARISTECH #7328 P-95 WHITE PLEX (MATTE SIDE TO BE 1ST SURFACE) CHEM WELDED TO RETURNS
RETURNS: 0.118" x 4" DEEP ARISTECH #6046 BLUE WITH 3635-70 DIFFUSER VINYL ON 2ND (INTERIOR) SURFACE.
BACKS: .080" ALUM BACK WITH 3/4" x .080" OUTSIDE ALUM RETURN AND 1/2" x 1/8" ALUM ANGLE CLIPS ON INTERIOR OF LETTER FOR FACE ATTACHMENT
PAINT: EXTERIOR PAINTED MATTHEWS MP-00366 CHASE BLUE SEMI-GLOSS FINISH (60-70 UNITS) AND INTERIOR PAINTED SPRAY-LAT STAR BRITE WHITE LIGHT ENHANCEMENT PAINT.
ILLUMINATION: SLOAN PRISM 7100K #701269-7WSJ1-MB WHITE LEDs AND SLOAN POWER SUPPLY REQUIRED FOR PROPER EVEN ILLUMINATION.

LOGO:
BACKS: .080" ALUM BACK WITH STACK WELDED 4" x .080" ALUM RETURNS.
LOGO CAN FACE: .080" ALUM BRIDGE ELEMENTS WELDED TO INSIDE & OUTSIDE RETURNS
PLEX FACE: .118" THERMO FORMED ARISTECH #6046 BLUE LOGO ELEMENTS CHEM WELDED TO 3/4" CLEAR PLEX 2ND SURFACE FACES.
PAINT: EXTERIOR PAINT MATTHEWS "CHASE NICKEL" #MP-19891 GLOSS FINISH AND INTERIOR PAINTED SPRAY-LAT STAR BRITE WHITE LIGHT ENHANCEMENT PAINT.
ILLUMINATION: SLOAN PRISM #701269-BLSJ1-MB BLUE LEDs AND SLOAN POWER SUPPLY AS REQUIRED FOR PROPER EVEN ILLUMINATION

ELECTRICAL REQUIREMENTS FOR LED ILLUMINATION
 As required by standard #2161, Signtech Electrical Advertising, Inc., exclusively uses secondary Ground fault-Interrupted (GFI) transformers.
 Each Sign MUST have: - A dedicated branch circuit
 - Three wires : Line, Ground, and Neutral.
 - Wire Size : Min 12 GA THHN Copper Wire.
 NOTE: The gauge of the wire is dictated by the length of the run & amperage as per NEC Article 600.
 - The ground wire must be continuous & go from the sign to the panelboard ground bus.



3D VIEW OF OCTAGON

Signtech
 4444 Federal Blvd. San Diego CA 92102
 Phone: (619) 527-6100 / Fax: (619) 527-6111
 signtech.com

MEMBER OF
 WSA INTERNATIONAL ASSOCIATION
 CESA

JP Morgan Chase Bank
#38200P308739
 Lone Tree and Hwy 4
 SEC Lone Tree and Hwy 4
 Brentwood, CA 94513

Initial Date: 07/25/18
 Salesperson: Arthur Navarro
 Coordinator: Melanie Priola
 Designer: biones
 Scale: As noted

CUSTOMER APPROVAL
 Customer Signature _____ Date _____
COPY, COLORS & SIZES

Signtech does NOT provide primary electrical to sign location - **RESPONSIBILITY OF OTHERS!**

Customer Signature _____ Date _____

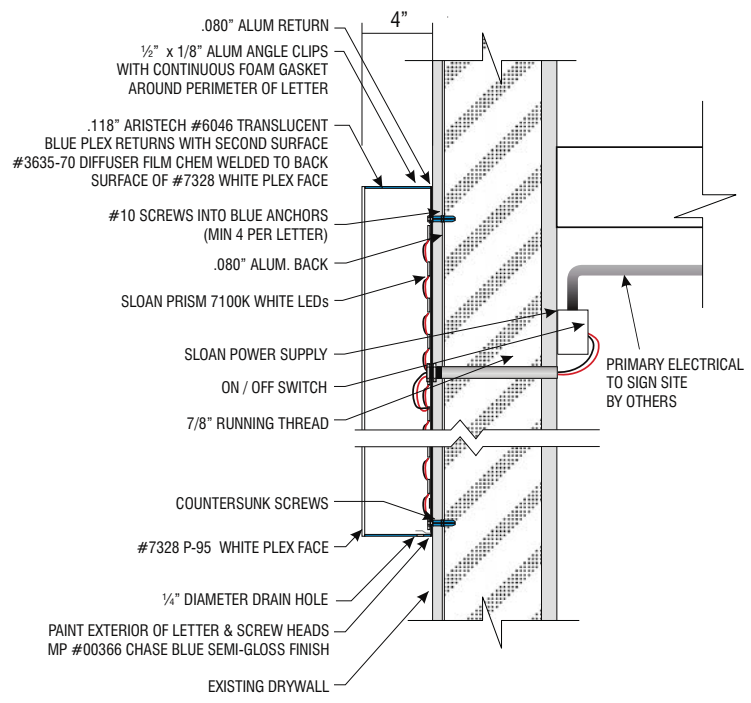
This design is the exclusive property of Signtech and cannot be reproduced in whole or in part, without their prior written approval.

Drawing Number: 18-0135

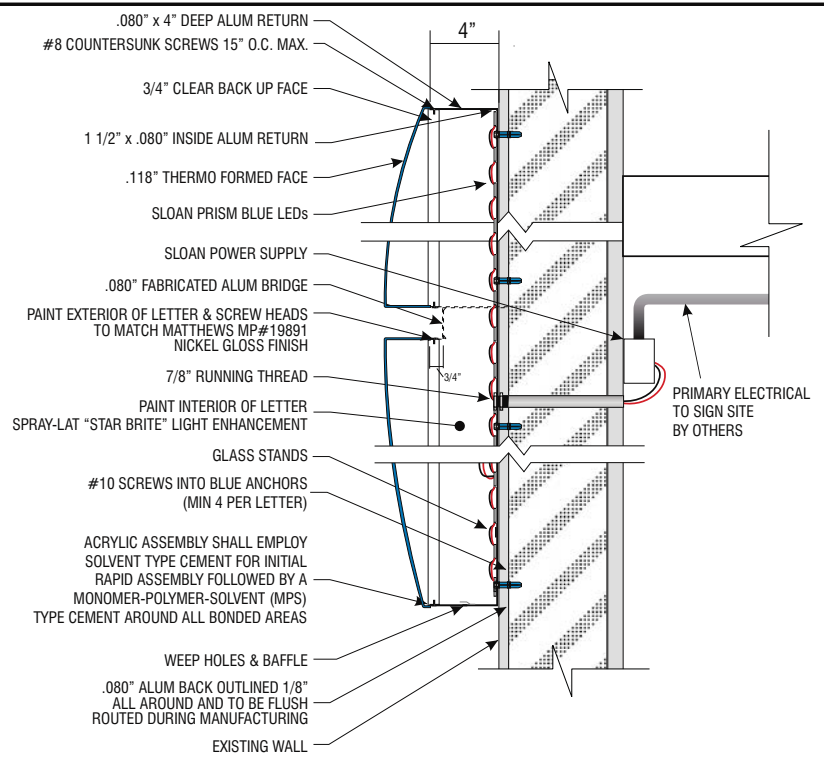
Project ID: CHASE_38200P308739

Attachment: Shops at Lone Tree Village MSP project plans (1792) : The Shops at Lone Tree Village Master Sign Program

ATTACHMENT METHOD TO BE VERIFIED BY INSTALLER AT THE FIELD DEPENDING ON WALL TYPE AND ACCESS.



1
6 **PLEX LETTER SECTION DETAIL** **SCALE: 1 1/2" = 1'-0"**



2
6 **LOGO SECTION DETAIL** **SCALE: 1 1/2" = 1'-0"**

Signtech
4444 Federal Blvd. San Diego CA 92102
Phone: (619) 527-6100 / Fax: (619) 527-6111
signtech.com

MEMBER OF
WSA **CECA**
INTERNATIONAL SIGN ASSOCIATION

JP Morgan Chase Bank
#38200P308739

Lone Tree and Hwy 4
SEC Lone Tree and Hwy 4
Brentwood, CA 94513

Initial Date: 07/25/18
Salesperson: Arthur Navarro
Coordinator: Melanie Priola
Designer: bjones
Scale: As noted

CUSTOMER APPROVAL

Customer Signature _____ Date _____
COPY, COLORS & SIZES

Signtech does NOT provide primary electrical to sign location -
RESPONSIBILITY OF OTHERS!

Customer Signature _____ Date _____

This design is the exclusive property of Signtech and cannot be reproduced in whole or in part, without their prior written approval.

Drawing Number: 18-0135

Project ID: CHASE_38200P308739

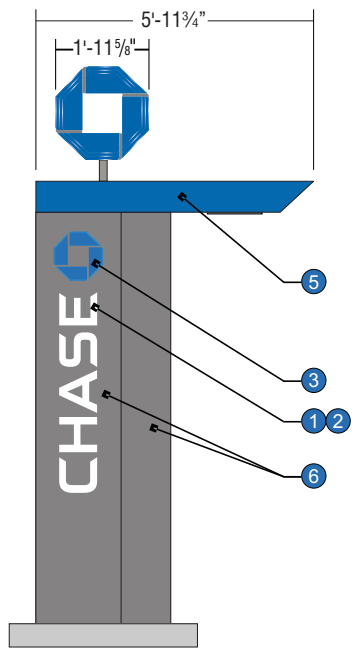
Attachment: Shops at Lone Tree Village MSP project plans (1792) : The Shops at Lone Tree Village Master Sign Program

GRAPHICS DEPICTED ARE FOR ILLUSTRATIVE PURPOSES ONLY USE ONLY APPROVED ARTWORK FOR PRODUCTION.

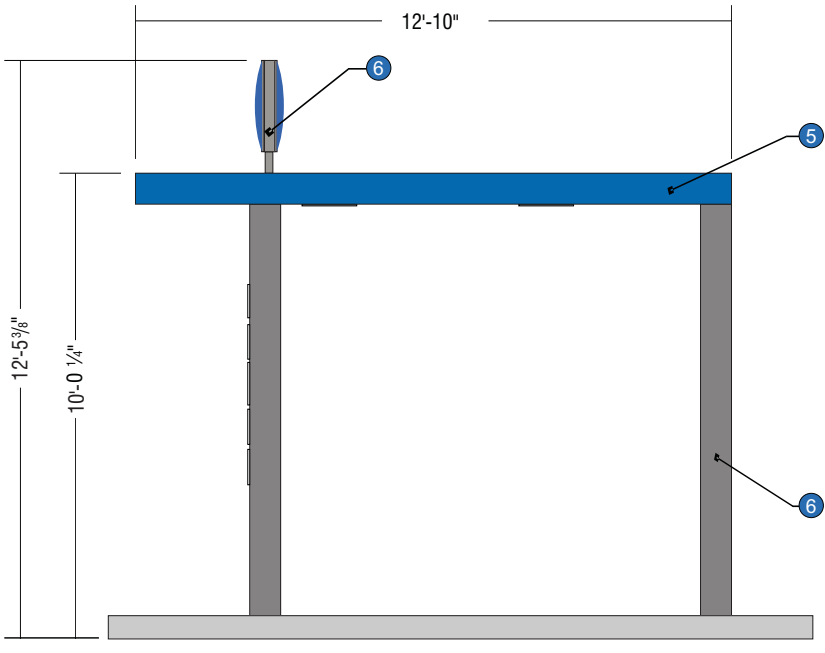
| | | | | | | | | | | | |
|---|---------------------------------|---|------------------------------|---|-----------------------------|---|---------------------------------------------------|---|-------------------------------------------------------------------------|---|----------------------------------------------|
| 1 | White Translucent 3M 3632-20 | 2 | White Diffuser 3M 3635-70 | 3 | Intense Blue 3M 3632-127 | 4 | Translucent Blue Aristech 6046 Matte Finish | 5 | Chase Metallic Blue Paint to match MP-49353 Metallic Gloss Finish | 6 | Chase Dark Nickel Paint to match MP-18248 |
|---|---------------------------------|---|------------------------------|---|-----------------------------|---|---------------------------------------------------|---|-------------------------------------------------------------------------|---|----------------------------------------------|

ALL EXPOSED FASTENER HEADS SHALL BE PAINTED TO MATCH THE EXTERIOR CABINET FINISH

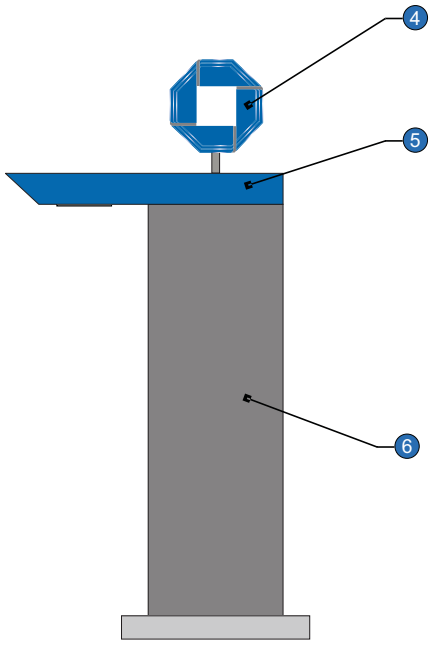
ALL EXPOSED PAINTED SURFACES SHALL BE COATED WITH MATTHEWS #282-208SP VOC GLOSS CLEAR, WITH MINIMUM 2 MILS DRY FILM THICKNESS (DFT) PER MATTHEWS APPLICATION SPECIFICATIONS.



APPROACH ELEVATION
SCALE: 3/8" = 1'-0"



FRONT VIEW CAN-ATM
SCALE: 3/8" = 1'-0"



DEPARTURE ELEVATION
SCALE: 3/8" = 1'-0"

E.8 SIGN TYPE CAN-ATM-SIG-OCT

MANUFACTURE AND INSTALL ONE (1) ILLUMINATED SIGNATURE ATM CANOPY w/ OCTAGON

11/14/11 CHANGED COLUMN TOP PLATES TO 1/2" FROM 1/4"

Signtech
4444 Federal Blvd. San Diego CA 92102
Phone: (619) 527-6100 / Fax: (619) 527-6111
signtech.com

MEMBER OF
WASA INTERNATIONAL ASSOCIATION
CESA

JP Morgan Chase Bank
#38200P308739

Lone Tree and Hwy 4
SEC Lone Tree and Hwy 4
Brentwood, CA 94513

Initial Date: 07/25/18
Salesperson: Arthur Navarro
Coordinator: Melanie Priola
Designer: biones
Scale: As noted

CUSTOMER APPROVAL

Customer Signature _____ Date _____
COPY, COLORS & SIZES

Signtech does NOT provide primary electrical to sign location - **RESPONSIBILITY OF OTHERS!**

Customer Signature _____ Date _____

This design is the exclusive property of Signtech and cannot be reproduced in whole or in part, without their prior written approval.

Drawing Number: 18-0135

Project ID: CHASE_38200P308739

Attachment: Shops at Lone Tree Village MSP project plans (1792) : The Shops at Lone Tree Village Master Sign Program



5 3D VIEW OF CAN-VE-X Scale:NTS

NOTES:

1. Design is based on 90 mph 3 sec gust design wind speed per IBC 2011. Exposure C and 50 psf ground snow load.
2. Spread foundation analysis is based on a safe vertical soil bearing pressure minimum of 2000 psf. Soil report was not furnished. Allowable bearing pressure should be verified prior to placement of concrete. Do not place foundation in fill.
3. Concrete shall be mixed to attain a minimum compressive strength of 3000 psi in 28 days.
4. Steel support members shall be free from defects and shall meet ASTM A500 grade B with a minimum yield strength of 46000 psi for tube. Steel plate and angle shall meet ASTM A36. Aluminum shapes be extruded from 6061-T6 alloy. Aluminum sheet shall be 3003-H14 alloy. Aluminum plate shall be 5052-H34 alloy.
5. Structural bolts shall be zinc coated A325 unless otherwise noted. All other fasteners shall be stainless steel or otherwise coated to prevent corrosion.
6. Anchor bolts shall be cut from A36 round stock. Exposed surfaces shall be galvanized or coated to prevent corrosion.
7. All voids between column base plate and foundation surface shall be completely filled with high strength, non-shrink grout.
8. Welds shall be made with E70xx electrodes for steel and a 4000 series filler for aluminum by persons qualified in accordance with AWS standards within the past two years.
9. Steel reinforcing bars shall conform to ASTM 615 grade 60 with deformations in accordance with ASTM A-305. Welding of reinforcing bars is prohibited.
10. This design is prototypical and should not be used for site specific applications unless deemed suitable by a competent Professional Engineer.



Signtech
 4444 Federal Blvd. San Diego CA 92102
 Phone: (619) 527-6100 / Fax: (619) 527-6111
 signtech.com



JP Morgan Chase Bank
#38200P308739

Lone Tree and Hwy 4
 SEC Lone Tree and Hwy 4
 Brentwood, CA 94513

Initial Date: 07/25/18
 Salesperson: Arthur Navarro
 Coordinator: Melanie Priola
 Designer: biones
 Scale: As noted

CUSTOMER APPROVAL

Customer Signature _____ Date _____
COPY, COLORS & SIZES

Signtech does NOT provide primary electrical to sign location -
RESPONSIBILITY OF OTHERS!

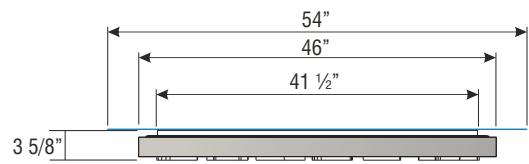
Customer Signature _____ Date _____

This design is the exclusive property of Signtech and cannot be reproduced in whole or in part, without their prior written approval.

Drawing Number: 18-0135

Project ID: CHASE_38200P308739

Attachment: Shops at Lone Tree Village MSP project plans (1792) : The Shops at Lone Tree Village Master Sign Program



TOP VIEW SUR-TTW-U-4
SCALE: 3/4" = 1'-0"

STIPPLE FINISH PAINT PROCESS FOR MATTHEWS #MP-18101 CHASE NICKEL:
BASE COAT:* 3-4 MEDIUM COATS OF MAP SVOC2471 FOR BASE COAT.
 ALLOW TO AIR DRY 12-24 HRS OR FORCE DRY AT 200 DEG. F. FOR 15MIN.
STIPPLE FINISH COAT:* MIX MAP SVOC1761 WITH CATALYST BUT_*NO*_REDUCER;
 SET PRESSURE POT AT 18-20 PSI TANK PRESSURE AND
 20-25 PSI ATOMIZING AIR AT THE PAINT GUN -
 USE 1.0 TO 1.2 FLUID NOZZLE.
 APPLY 5-6 PASSES OF A FINE TIGHT STIPPLE

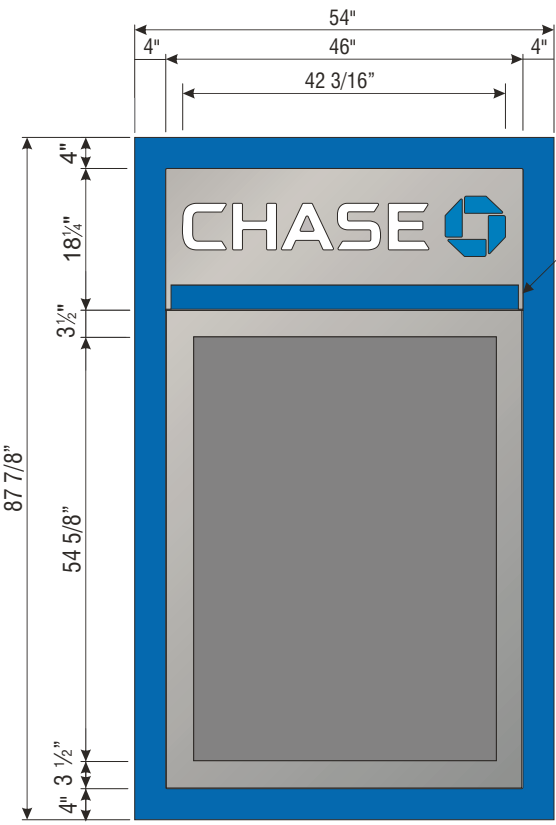
STIPPLE FINISH PAINT PROCESS FOR MATTHEWS #MP-49353 CHASE BLUE METALLIC:
BASE COAT:* 3-4 MEDIUM COATS OF SVOC2472 SP FOR BASE COAT.
 ALLOW TO AIR DRY 12-24 HRS OR FORCE DRY AT 200 DEG. F. FOR 15MIN.
STIPPLE FINISH COAT:* MIX MAP SVOC2049 SP WITH CATALYST BUT_*NO*_REDUCER;
 SET PRESSURE POT AT 18-20 PSI TANK PRESSURE AND
 20-25 PSI ATOMIZING AIR AT THE PAINT GUN -
 USE 1.0 TO 1.2 FLUID NOZZLE.
 APPLY 5-6 PASSES OF A FINE TIGHT STIPPLE

NOTE: PUSH-THRU ACRYLIC SHALL HAVE A MILL FINISH ON ALL ROUTED EDGES

ALL EXPOSED FASTENER HEADS SHALL BE PAINTED TO MATCH THE EXTERIOR CABINET FINISH

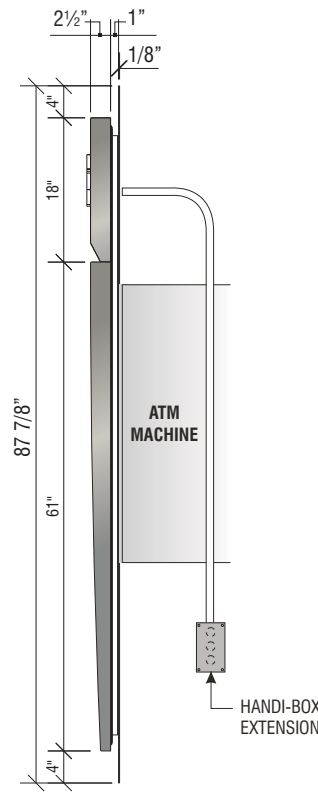
SLOAN BLUE LED STRIPE AROUND PERIMETER TO PROVIDE HALO-LIT EFFECT AGAINST BACK PANEL

GRAPHICS DEPICTED ARE FOR ILLUSTRATIVE PURPOSES ONLY! USE ONLY APPROVED ARTWORK FOR PRODUCTION.

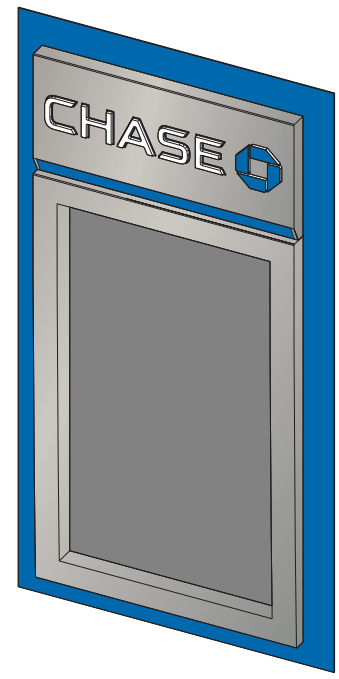


FRONT VIEW SCALE: 3/4" = 1'-0"

.125" ALUM. 5/8" WIDE SIDE RETAINER



SIDE VIEW



PERSPECTIVE VIEW

1.15 SIGN TYPE SUR-TTW-U-4-TP

MANUFACTURE AND INSTALL ONE (1) INTERNALLY ILLUMINATED THIN PROFILE ATM SURROUND

4444 Federal Blvd. San Diego CA 92102
 Phone: (619) 527-6100 / Fax: (619) 527-6111
 signtech.com

MEMBER OF WSA, ICA, CESA

JP Morgan Chase Bank
#38200P308739

Lone Tree and Hwy 4
 SEC Lone Tree and Hwy 4
 Brentwood, CA 94513

Initial Date: 07/25/18
 Salesperson: Arthur Navarro
 Coordinator: Melanie Priola
 Designer: biones
 Scale: As noted

CUSTOMER APPROVAL

Customer Signature _____ Date _____

COPY, COLORS & SIZES

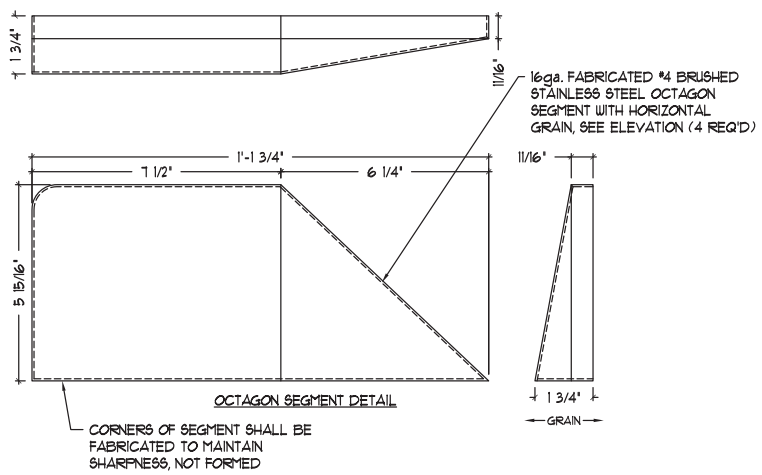
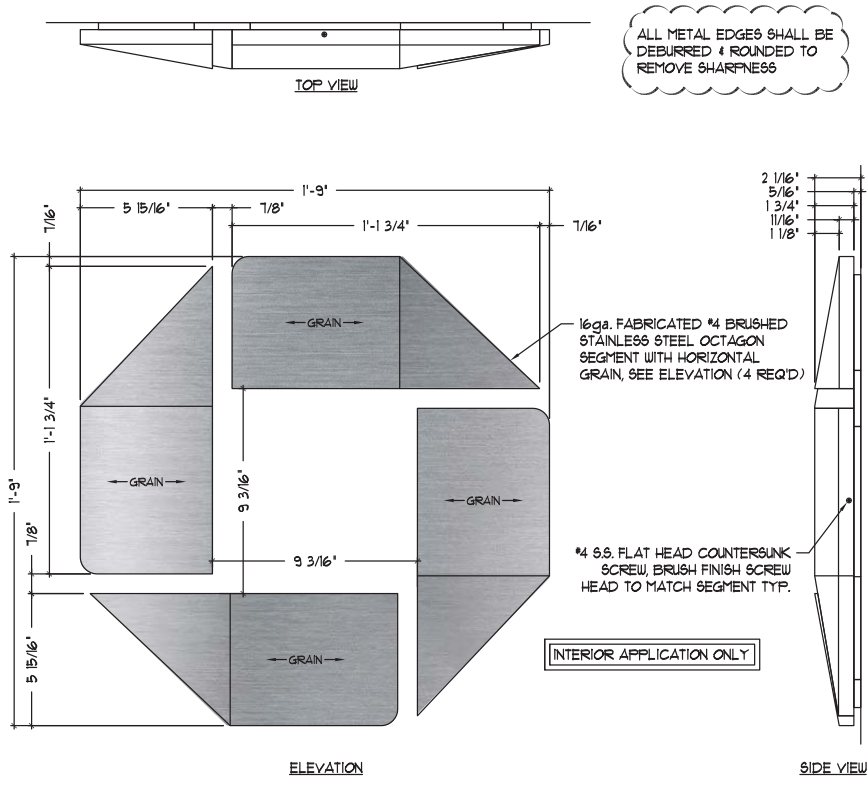
Signtech does NOT provide primary electrical to sign location - **RESPONSIBILITY OF OTHERS!**

Customer Signature _____ Date _____

This design is the exclusive property of Signtech and cannot be reproduced in whole or in part, without their prior written approval.

Drawing Number: 18-0135
 Project ID: CHASE_38200P308739

Attachment: Shops at Lone Tree Village MSP project plans (1792) : The Shops at Lone Tree Village Master Sign Program



ALL STAINLESS STEEL SURFACES SHALL BE TREATED WITH CITRISURF T1 CITRIC ACID SOLUTION PER THE MANUFACTURER'S SPECIFICATIONS & RECOMMENDATIONS, INCLUDING CLEANING THE STAINLESS STEEL PRIOR TO APPLICATION & WIPING ON THE ACID SOLUTION PARALLEL TO THE GRAIN DIRECTION. INFORMATION ABOUT CITRISURF T1 CAN BE OBTAINED BY VISITING www.citrisurf.com OR BY CALLING 1-847-854-2800.

- NOTES:
1. Design is based on the guidelines for interior applications provided by the International Building Code 2006 Edition.
 2. Stainless steel shall be free from defects and shall be Type 304. Aluminum sheet shall be 3003-H14 alloy.
 3. All fasteners shall be stainless steel of otherwise coated to prevent corrosion.
 4. Welds shall be made with a 4000 series filler for aluminum and with Type 308 electrodes for stainless steel by persons qualified in accordance with AWS standards within the past two years.
 5. This design is prototypical and should not be used for site specific applications unless deemed suitable by a competent Professional Engineer.

Signtech
 4444 Federal Blvd. San Diego CA 92102
 Phone: (619) 527-6100 / Fax: (619) 527-6111
signtech.com

MEMBER OF
 WSA
 INTERNATIONAL SIGN ASSOCIATION
 MEMBER OF CESA

JP Morgan Chase Bank
#38200P308739

Lone Tree and Hwy 4
 SEC Lone Tree and Hwy 4
 Brentwood, CA 94513

Initial Date: 07/25/18
 Salesperson: Arthur Navarro
 Coordinator: Melanie Priola
 Designer: bjones
 Scale: As noted

CUSTOMER APPROVAL

Customer Signature _____ Date _____
COPY, COLORS & SIZES

Signtech does NOT provide primary electrical to sign location -
RESPONSIBILITY OF OTHERS!

Customer Signature _____ Date _____

This design is the exclusive property of Signtech and cannot be reproduced in whole or in part, without their prior written approval.

Drawing Number: 18-0135

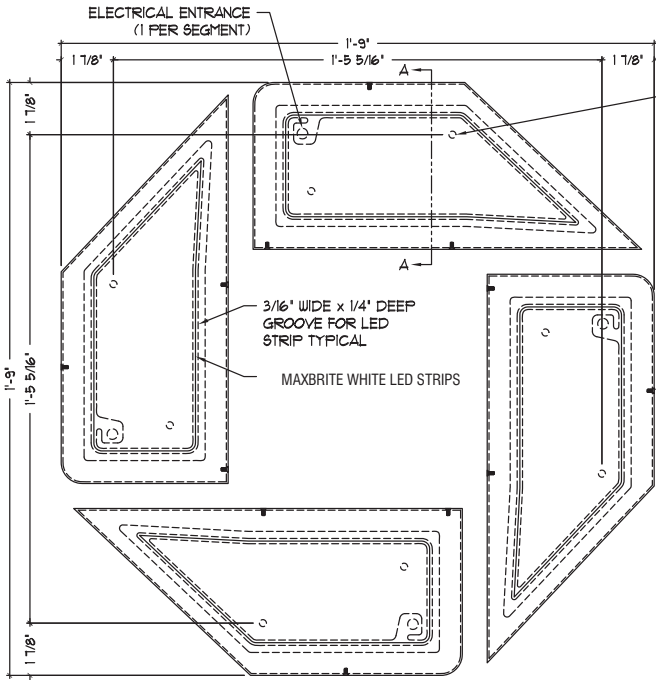
Project ID: CHASE_38200P308739

1.18

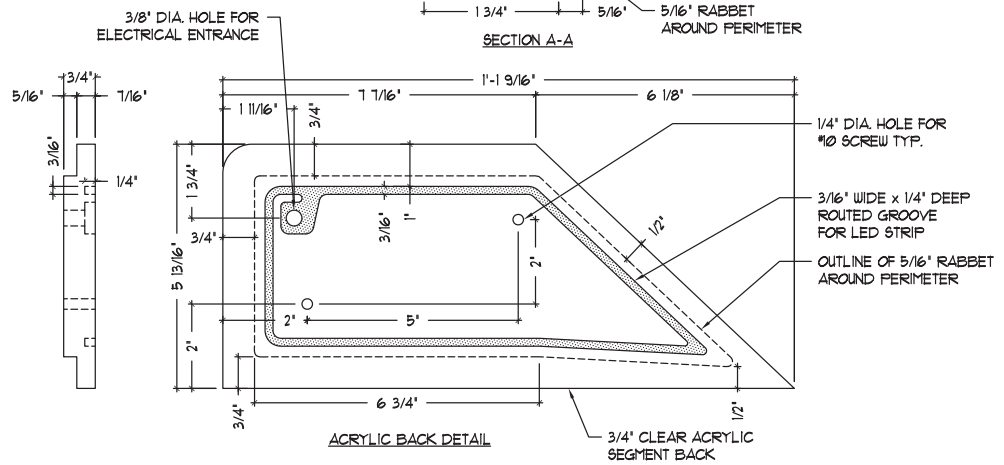
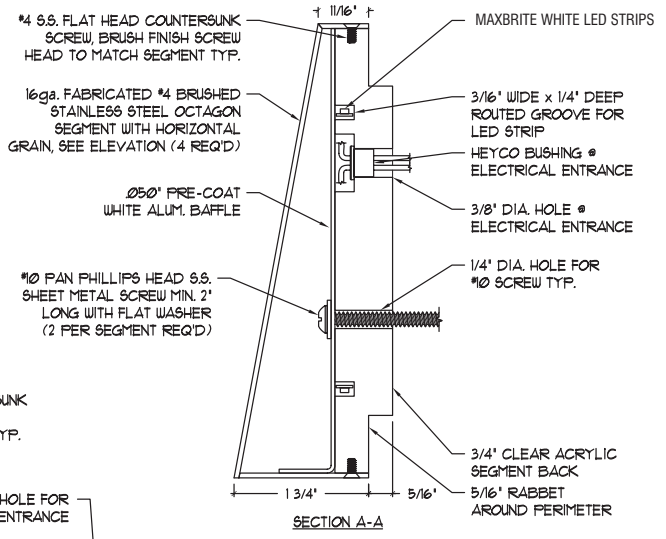
SIGN TYPE AFF-SS-OCT-21 WHITE HALO-ILLUMINATION

MANUFACTURE AND INSTALL ONE (1) ILLUMINATED STAINLESS STEEL TELLER LINE OCTAGON

Attachment: Shops at Lone Tree Village MSP project plans (1792) : The Shops at Lone Tree Village Master Sign Program



POWER SUPPLY SHALL BE REMOTELY MOUNTED BEHIND WALL



ELECTRICAL REQUIREMENTS:

LED: MAXBRITE WHITE LED STRIPS

POWER SUPPLY: (1) MAXBRITE ECONO LP-1200P-12 @ Ø8A EACH (REMOVEDLY MOUNTED)

DIMMER: (1) MAXBRITE PRE-DIM12V (REMOVEDLY MOUNTED)

TOTAL LOAD: Ø8A @ 120VAC

CIRCUITS: (1) 20 AMP REQUIRED

NOTE: REMOTELY MOUNTED 12 VOLT DC MAXBRITE DIMMER MUST BE WIRED TO THE SECONDARY (12V) SIDE OF THE POWER SUPPLY.

Signtech

4444 Federal Blvd. San Diego CA 92102
Phone: (619) 527-6100 / Fax: (619) 527-6111
signtech.com

MEMBER OF WSA, CESA, ICA

JP Morgan Chase Bank
#38200P308739

Lone Tree and Hwy 4
SEC Lone Tree and Hwy 4
Brentwood, CA 94513

Initial Date: 07/25/18
Salesperson: Arthur Navarro
Coordinator: Melanie Priola
Designer: bjonas
Scale: As noted

CUSTOMER APPROVAL

Customer Signature _____ Date _____

COPY, COLORS & SIZES

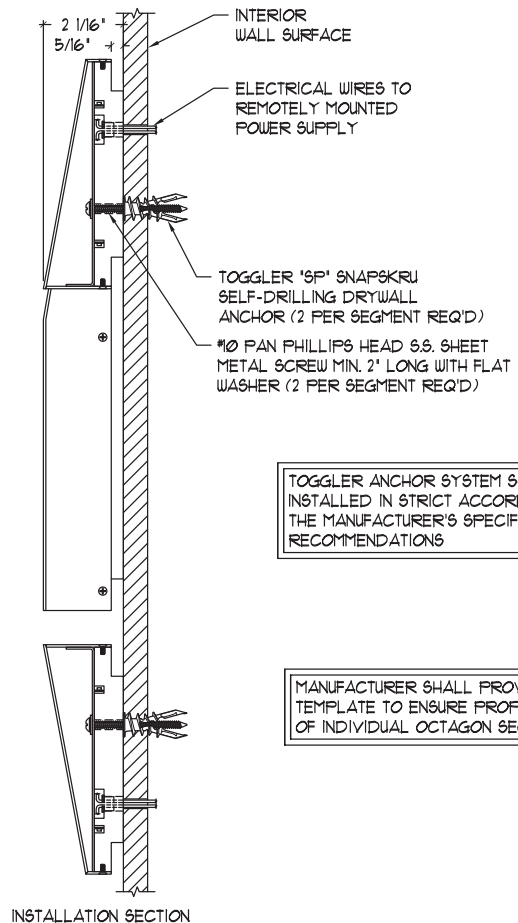
Signtech does NOT provide primary electrical to sign location - **RESPONSIBILITY OF OTHERS!**

Customer Signature _____ Date _____

This design is the exclusive property of Signtech and cannot be reproduced in whole or in part, without their prior written approval.

Drawing Number: 18-0135
Project ID: CHASE_38200P308739

Attachment: Shops at Lone Tree Village MSP project plans (1792) : The Shops at Lone Tree Village Master Sign Program



TOGGLER ANCHOR SYSTEM SHALL BE INSTALLED IN STRICT ACCORDANCE WITH THE MANUFACTURER'S SPECIFICATIONS & RECOMMENDATIONS

MANUFACTURER SHALL PROVIDE A MOUNTING TEMPLATE TO ENSURE PROPER ALIGNMENT OF INDIVIDUAL OCTAGON SEGMENTS

INSTALLATION SECTION



Signtech

4444 Federal Blvd. San Diego CA 92102
 Phone: (619) 527-6100 / Fax: (619) 527-6111
 signtech.com



JP Morgan Chase Bank
#38200P308739

Lone Tree and Hwy 4
 SEC Lone Tree and Hwy 4
 Brentwood, CA 94513

Initial Date: 07/25/18
 Salesperson: Arthur Navarro
 Coordinator: Melanie Priola
 Designer: biones
 Scale: As noted

CUSTOMER APPROVAL

Customer Signature _____ Date _____
COPY, COLORS & SIZES

Signtech does NOT provide primary electrical to sign location -
RESPONSIBILITY OF OTHERS!

Customer Signature _____ Date _____

This design is the exclusive property of Signtech and cannot be reproduced in whole or in part, without their prior written approval.

Drawing Number: 18-0135

Project ID: CHASE_38200P308739

Attachment: Shops at Lone Tree Village MSP project plans (1792 : The Shops at Lone Tree Village Master Sign Program)

