

Sand Creek Sports Complex

Park and Recreation Commission

April 27, 2023



VERDE DESIGN

Agenda

- Background
 - Introductions
 - Schedule
- Community Input Process
 - Workshops Summary
 - General Preferences
- Final Draft Concept
 - Park Elements
 - Overall Conceptual Plan
 - Plan Enlargements
- Phasing and Cost Estimate
- Next Steps



How did we get here?

- Community need for more athletic fields
- Project is part of City's Strategic Plan for FY 2022/23 – FY 2023/24
- Funding:
 - American Rescue Plan Act Fund
 - Parks and Trails Development Impact Fee Fund
 - Long-term Interfund loan



City Parks – Existing Sports Fields

Park	Softball/ Baseball	Soccer Fields	Size, yd	Surface	Lighted	Parking Stalls #	Parkin g/Field	Street Parking	Adjacent Facilities
Sunset	6	4	(3) 70x120 (1) 70x110	Nat. Grass	Yes	569	57	No	None
Apple Hill	1	1	46x65	Nat. Grass	No	51	26	Yes	Ron Nunn Elem. School
Balfour-Guthrie	1	1	60x100	Nat. Grass	Yes	164	82 ¹	Yes	Commercial Center
Buena Vista	0	1	50x70	Nat. Grass	No	0	0	Yes	Detention Basin
Garin	0	2	(1) 50x80 (1) 40x60	Nat. Grass	No	81	41	Yes	Garin Elem. School, Edna Middle School
Oak Meadow	2	2	(1) 40x70 (1) 40x55	Nat. Grass	Yes	33	8	Yes	R Paul Krey Elem. School
Summerwood	0	1	(1)50x80	Nat. Grass	No	0	0	Yes	Bristow Middle School

¹ Shared with Commercial Center



Community Outreach

- Community Workshop #1 January 31, 2023
- Community Workshop #2 March 9, 2023
- **Park and Recreation Commission** Today

Design and Construction Documents

- 65% Construction Documents August 2023
- 95% Construction Documents October 2023
- 100% Construction Documents December 2023

Bidding and Construction

- Bid Period 2024
- Construction Start 2024

Community Input Process



Community Workshop #1 Recap

- General preference for synthetic turf fields over natural turf fields
- Soccer should be the focus, with less emphasis on baseball/softball
- Parking is an important consideration – no street parking nearby
- Other Comments:
 - More warm up areas
 - Shade is important – trees, shade structures
 - Limit tennis/pickleball if less than (2) courts
 - Solar panels in parking
 - Add staff office/maintenance
 - Security cameras
 - Homeless issues – how to mitigate?



Community Workshop #2 Recap

	Concept 1	Concept 2	Concept 3
Soccer Field Sizes	(3) 70 x 110 yd	(2) 70 x 110 yd (1) 75 x 120 yd	(3) 70 x 110 yd
Additional Soccer Fields	No	No	Yes (2) U6/U8, (2) Modular
Baseball/Softball	Yes	No	No
Tennis/Pickleball	Yes	No	No
Parking Stalls Count	369	424	434
Parking/Soccer Field Ratio	123	141	145



Community Workshop #2 – Preferences

- General preference for Concept 3
- Modular fields set up for various sports
- Interest in pump track
- Lacrosse stripping in one of the fields
- Smaller playground and further away from street
- Prefer organic infill materials
- More shade
- Larger parking lot in Concept 3

Questions:

- Which concept do you prefer?
- Are the proposed program elements what you want to see in the park?
- What site elements/features should be removed, added or modified?
- Are there other options that should be considered?

- Green pen – What elements/features work well on these concepts?
- Red pen – What elements/features do not work well on these concepts?
- Blue pen – What are additional items/needs that should be considered?
- Black Pen – List and prioritize positive and negative elements/features



Concept 1
 Cost impact
 Multi-use Area
 Changing rooms
 Safety of kids with baseballs or softball with kids practicing soccer



Concept 2
 Tournament field
 Design is scalable
 Changing room
 Future Maintenance - Easier
 Always add Baseball/Softball at a later date
 B.B.B. part of the basin, warm-up area & rest rooming zones for tennis
 Pump track - increase liability



Concept 3
 Parking Spaces
 Modular soccer field
 Changing Room - kids need to shower
 The artificial fields after more activities outside of soccer
 children play area too close to street / bus stop
 Switch modular soccer field with play area
 Making distance to restaurants
 Baseball & Softball fields can be designed into the basin
 Priority - All weather field



Questions?



Park Elements



Multi-Use Fields



Multi-Use Fields



Hardcourt Modular Courts

- Musco
- (3) Sizes
- Integrated Lighting

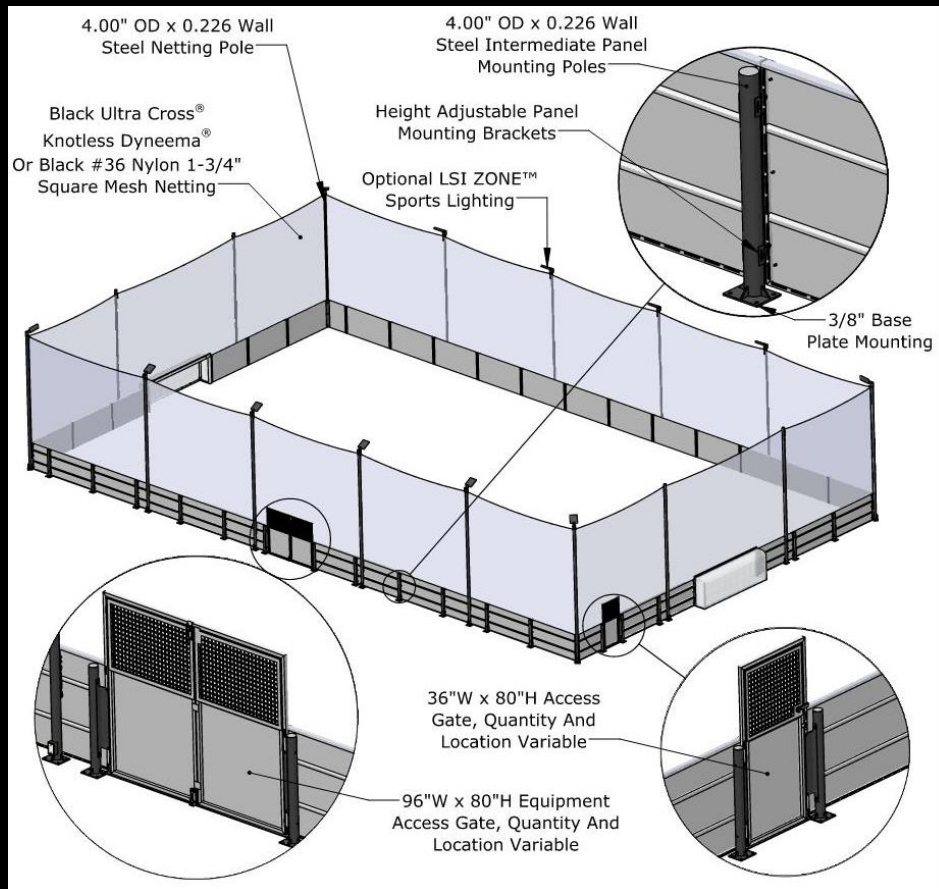


Hardcourt Modular Courts



Hardcourt Modular Courts

- Sportsfield
- Custom Sizes, mitered corners
- Integrated Lighting



Hardcourt Modular Courts

- Kompan
- (5) sizes



Tennis/Pickleball



All-Inclusive Play

- Accessibility
- Multi-Sensory



Pump Track

- Compacted Dirt
- Asphalt



Exercise Areas

- Intergenerational
- Exercise Stations



Concession & Restroom



Shade Structures



Creek Enhancement



Site Furnishings



Sand Creek Sports Complex



Final Draft Concept



Overall Conceptual Plan



Sand Creek Sports Complex



Plan Enlargements – Concession Building Area



PICNIC TABLE W/ SHADE TREES, TYP.

MULTI-USE HARD COURT

- Pickleball
- Futsal

BENCH UNDER SHADE, TYP.

WOOD/METAL ARBOR SHADE STRUCTURE

GAME TABLE, TYP

TREE W/ GRATE

PLANTING

- Shade/Ornamental Trees
- Flora Display Planting
- Stormwater Treatment

CONCESSION BUILDING

- Concession Room
- Storage(s)
- Accessible Restrooms
- Office Room
- Drinking Fountain

SYNTHETIC TURF WARM-UP AREA

POP-UP TENT AREA, TYP.

SYNTHETIC TURF TEAM PICTURE STAGE

PARK SIGNAGE WALL

SEATWALL UNDER SHADE TREE

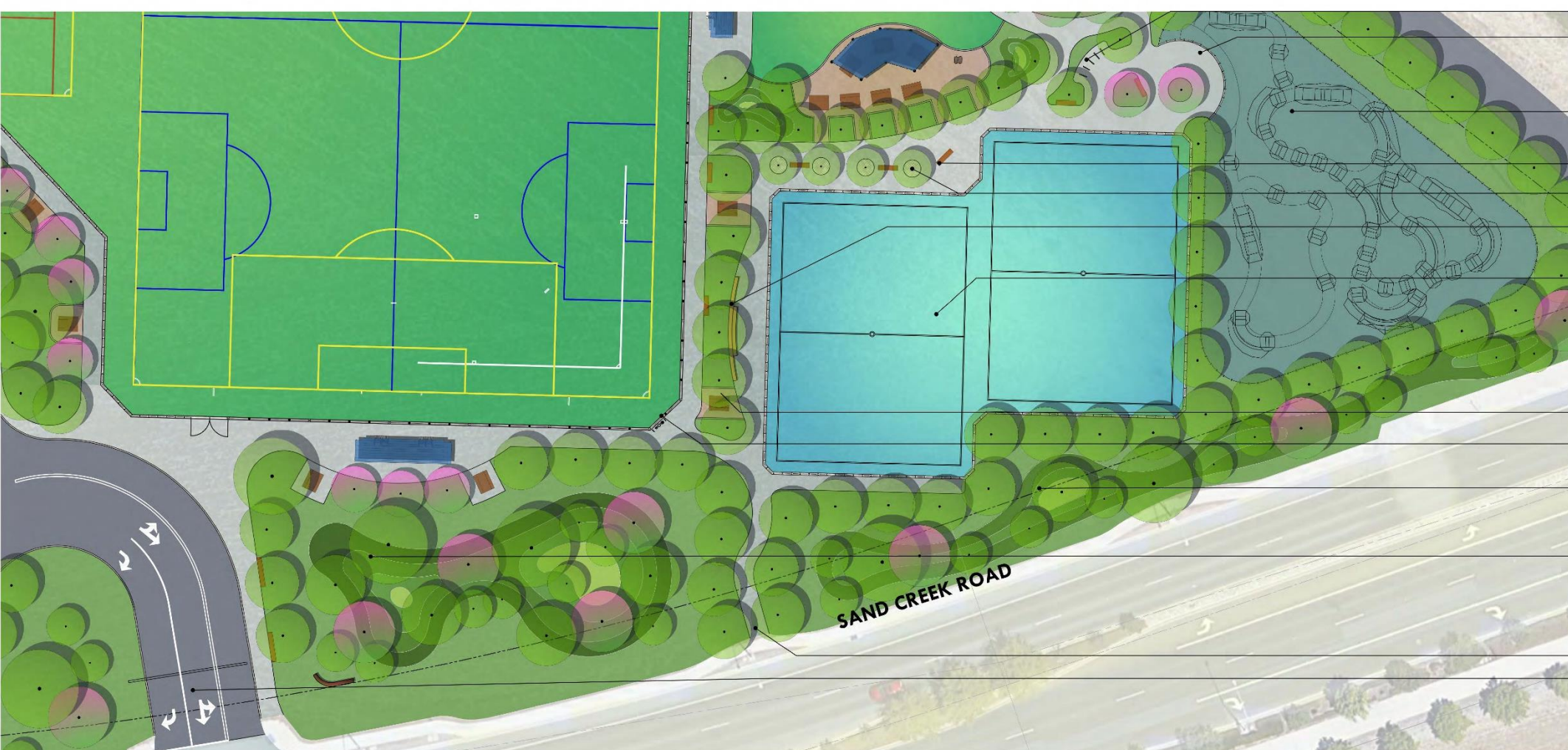
SPECIALITY PAVING

ACCESSIBLE PARKING

Plan Enlargements – Playground Area



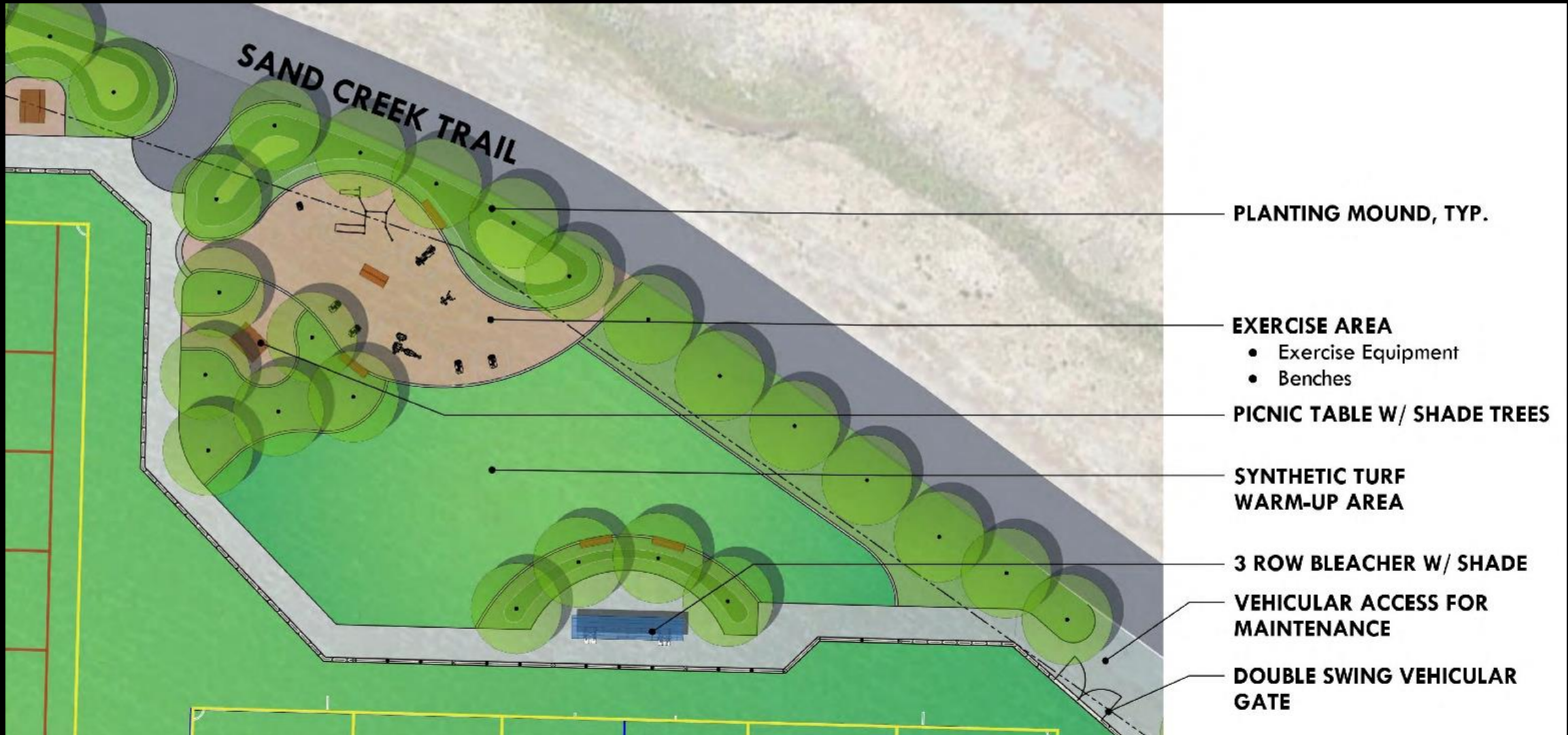
Plan Enlargements – Modular Court Area



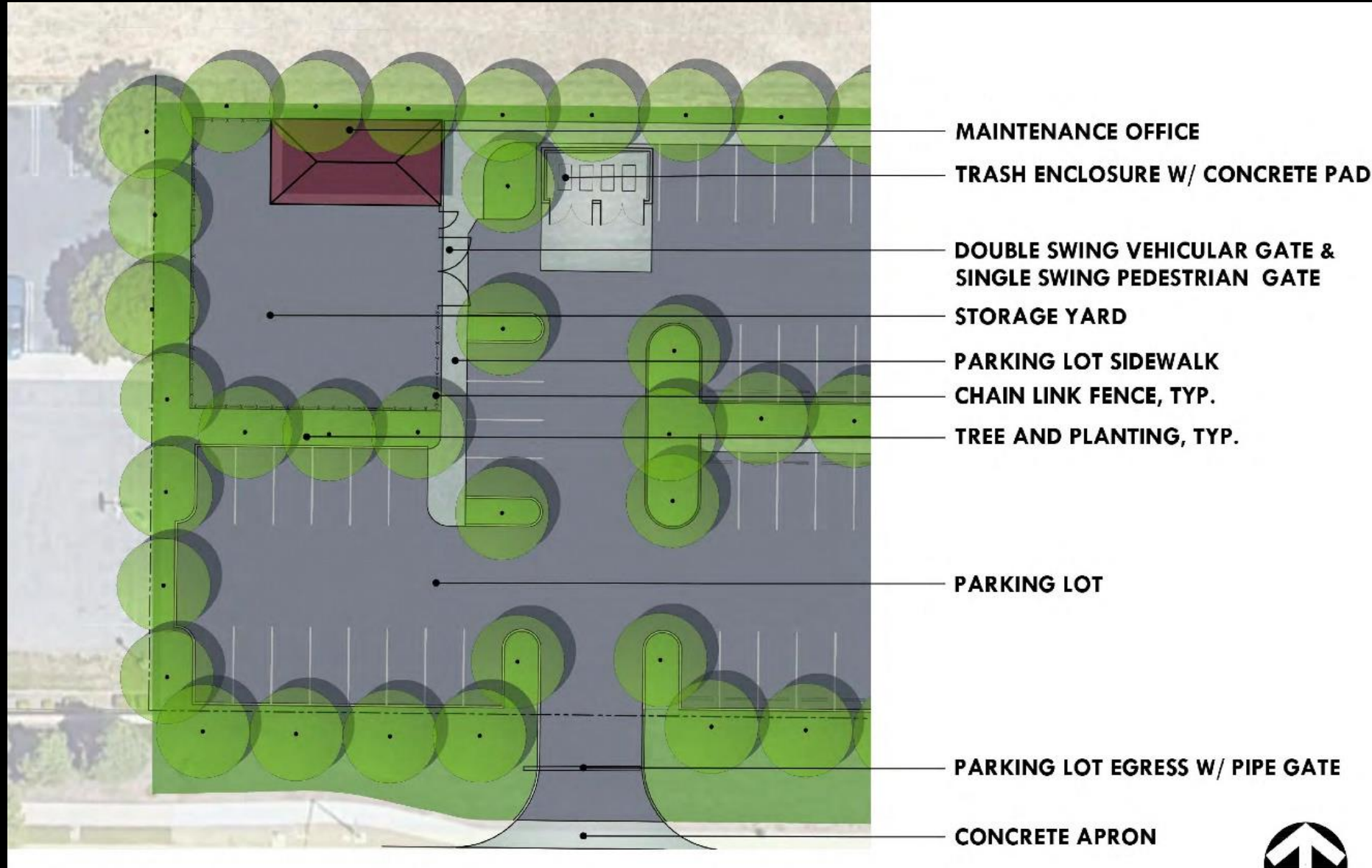
- BIKE PARKING**
- PUMP TRACK ENTRY**
 - Bench w/ Shade Trees
 - Rule Sign
 - Bike Repair Station
- PUMP TRACK**
 - Beginner
 - Intermediate
- BENCH, TYP.**
- SHADE TREE W/ GRATE, TYP.**
- TERRACE SEATING WALL UNDER SHADE TREE**
- (2) MODULAR MULTI-USE FIELD (25 x35 Yard/Each)**
 - Bench w/ Shade Trees
 - Terrace Seatwall
 - Futsal
 - Roller Hockey
 - Basketball
 - Volleyball
- PICNIC TABLE, TYP.**
- DRINKING FOUNTAIN**
- LANDSCAPING AREA**
 - Noise abatement
 - Stormwater Treatment
- PARKING ENTRY PLANTING**
 - Entry Signage
 - Specimen Trees
 - Flora Display
 - Seating
 - Stormwater Treatment Area
- ACCESS TO SAND CREEK ROAD SIDEWALK**
- VEHICULAR EGRESS W/ PIPE GATE**



Plan Enlargements – Along Sand Creek Trail



Plan Enlargements – Maintenance Area



Phase 2 Concept – District Basin



Questions?



Overall Conceptual Plan - Cost

Construction Cost:
\$30.2 MM



Phasing – Phase A

- (3) Sports fields
- No park elements on E and N sides
- Reduced parking
- No scoreboard
- No bleachers
- Musco poles (Bid Alt.)
- Maintenance (Bid Alt.)
- Pickleball (Bid Alt.)
- Picnic and planting (Bid Alt.)

Construction Cost:
\$18.7 MM (Musco poles included – 3 fields)



Cost Estimate

Item	Phase A and B	Phase A
Project Budget	\$15,000,000	\$15,000,000
Total Estimated Project Construction Costs	-\$30,235,793	-\$17,135,470
Additional Costs	-\$2,418,569	-\$2,418,569
Design & Engineering Services	-\$1,691,593	-\$1,691,593
CEQA	-\$97,826	-\$97,826
City Testing Fees	-\$65,000	-\$65,000
City-Paid Utility Connections	-\$564,150	-\$564,150
Net Total	-\$17,654,362	-\$4,554,039

Bid Alternates		
Bid Alternate #1 Picnic Areas, Warm Up, and Planting		\$310,236
Bid Alternate #2 Multi-Use Hardcourt and Picnic Area		\$522,307
Bid Alternate #3 Maintenance Area		\$1,067,569
Bid Alternate #4 Sports Fields Lights, (3) Fields		\$1,570,512



Questions



Next Steps

- Revisions to Final Draft Concept
- 30% Progress Submittal
- Environmental Review - CEQA



Thank You!!

Sand Creek Sports Complex

Park and Recreation
Commission

